

## DESIGN INTENT

### VISION

Located on the edge of the naturally astonishing harbour, Wellington waterfront will be transformed into an environment where the sustainable production and distribution of locally grown foods will be a focus on improving Wellington's food resilience. Integrating urban agriculture in to the heart of Wellington's inner city will ensure the combination of natural processes within an urban setting will create a functional landscape.

### OVERARCHING AIM

To generate various opportunities for public engagement along Wellingtons waterfront, through the incorporation of Urban agriculture as a catalyst for design. With an emphasis on the production and distribution of fresh/organically grown produce.

### SUB AIMS – OBJECTIVES

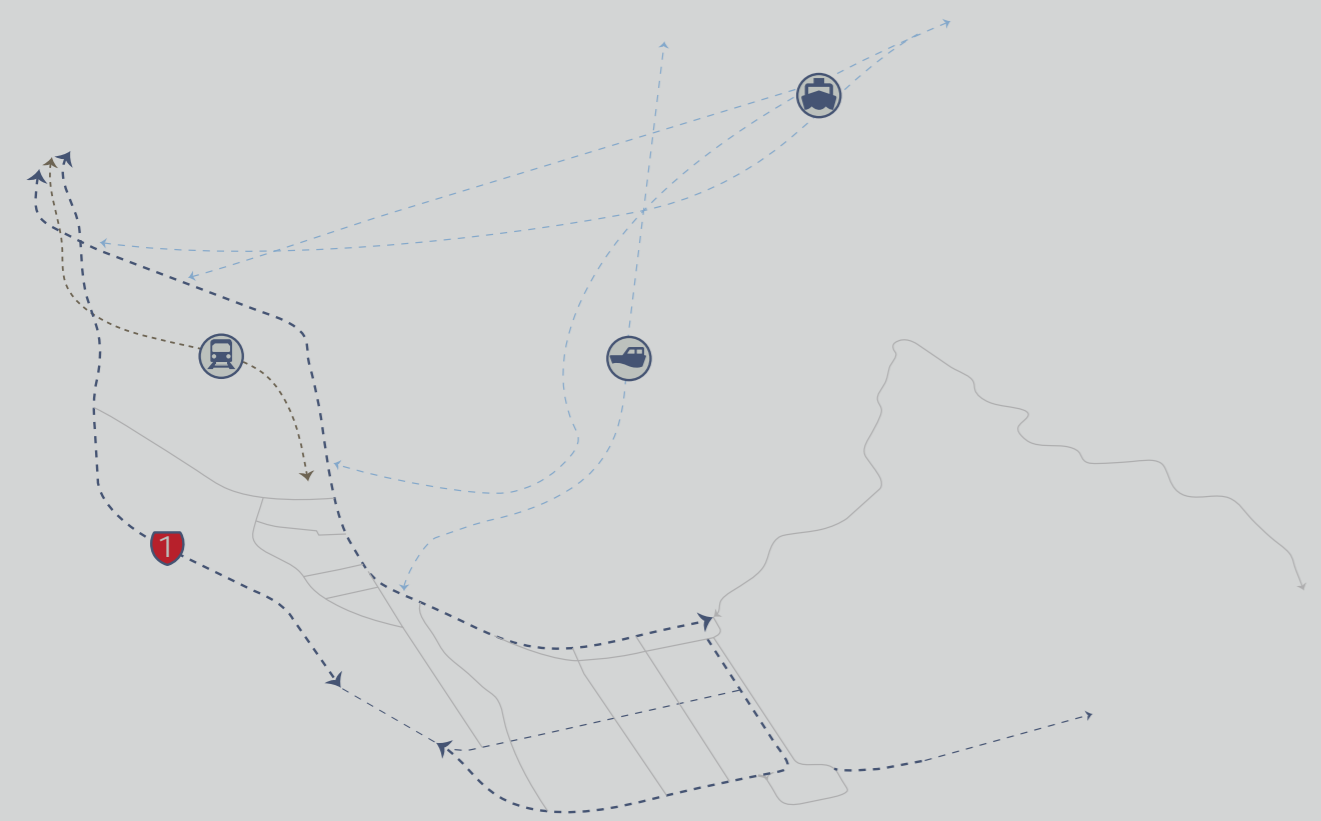
1. To develop suitable infrastructure that will allow for the sufficient production and distribution of food related products.
  - Introduce rooftop and community gardens within the site in order to produce both commercial and public food.
  - To utilize Wellington harbour and develop suitable infrastructure relating to the production of food related products.
  - To develop a landscape where fresh produce is distributed within a close proximity to where its grown, specifically delivered to nearby markets/food outlets.
2. To focus on introducing relationships between food and the urban setting in order to develop an experience based site, encouraging public engagement.
  - Provide spaces that are specifically intended for public events/engagement, ensuring human interaction within the site.
  - To establish mixed-use development, with a significant focus on the experience of the visitor within the landscape.
  - Develop convenient public amenities, focusing on the theme of food production in an urban setting.
  - To develop a landscape where the experience of the user is a priority, ensuring self directed pedestrian and cycling movement is accessible throughout the site.
3. To create a practical, yet artful landscape, adding another dimension to a functional design that revitalizes Wellington's waterfront.
  - To provide a unique method of green infrastructure that specifically relates to food production, whilst presenting artful features within the landscape.
  - To introduce unique methods of food production that are functional as well as aesthetically pleasing to view.

### KEEPING LOCAL

Wellington is a city that is extremely compact and provides little room for general agricultural production methods, producing extremely limited quantities of food, heavily relying on importing products for consumers. Food resilience heavily relies on the security of food, and must withstand various and unforeseen disturbances. In order for Wellington to be food resilient, Harbour Harvest will collaborate with the surrounding 'local' regions ensuring a suitable structure is introduced.

The most important element when referring to food system resilience/food security that directly determines the successfulness of urban agriculture, is the sufficient production, transportation, distribution and consumption of food related products. Neighboring provinces in the greater Wellington region such as Wairarapa, Manawatu Hawkes Bay and Whanganui are currently thriving locations for agriculture production, specifically sheep, beef and dairy farming. Harbour Harvest will integrate the necessary nourishments produced in the surrounding regions, with the diverse range of food produced in Downtown Wellington. The close distances between Wellington and local regions will allow for the products to be transported locally, rather than nationally/internationally. Enabling a reduction of Wellingtons current contribution towards food miles, whilst enhancing Wellingtons food resilience.

### WELLINGTON ROADING AND TRANSPORT NETWORK



### WELLINGTON TRAILS AND ATTRACTIONS



### KEY ATTRACTIONS

- 1 INTER-ISLANDER FERRY
- 2 SKY STADIUM
- 3 PIPITEA MARAE
- 4 WELLINGTON TRAIN STATION
- 5 OLD GOVERNMENT BUILDING
- 6 THE BEEHIVE/PARLIAMENT
- 7 EAST TO WEST FERRY
- 8 TSB BANK ARENA

Wellington is a compact city, which is an advantage in regards to everything being within a close proximity. Surrounding the Harbour Harvest site are a number of key attractions that will draw people towards the site.

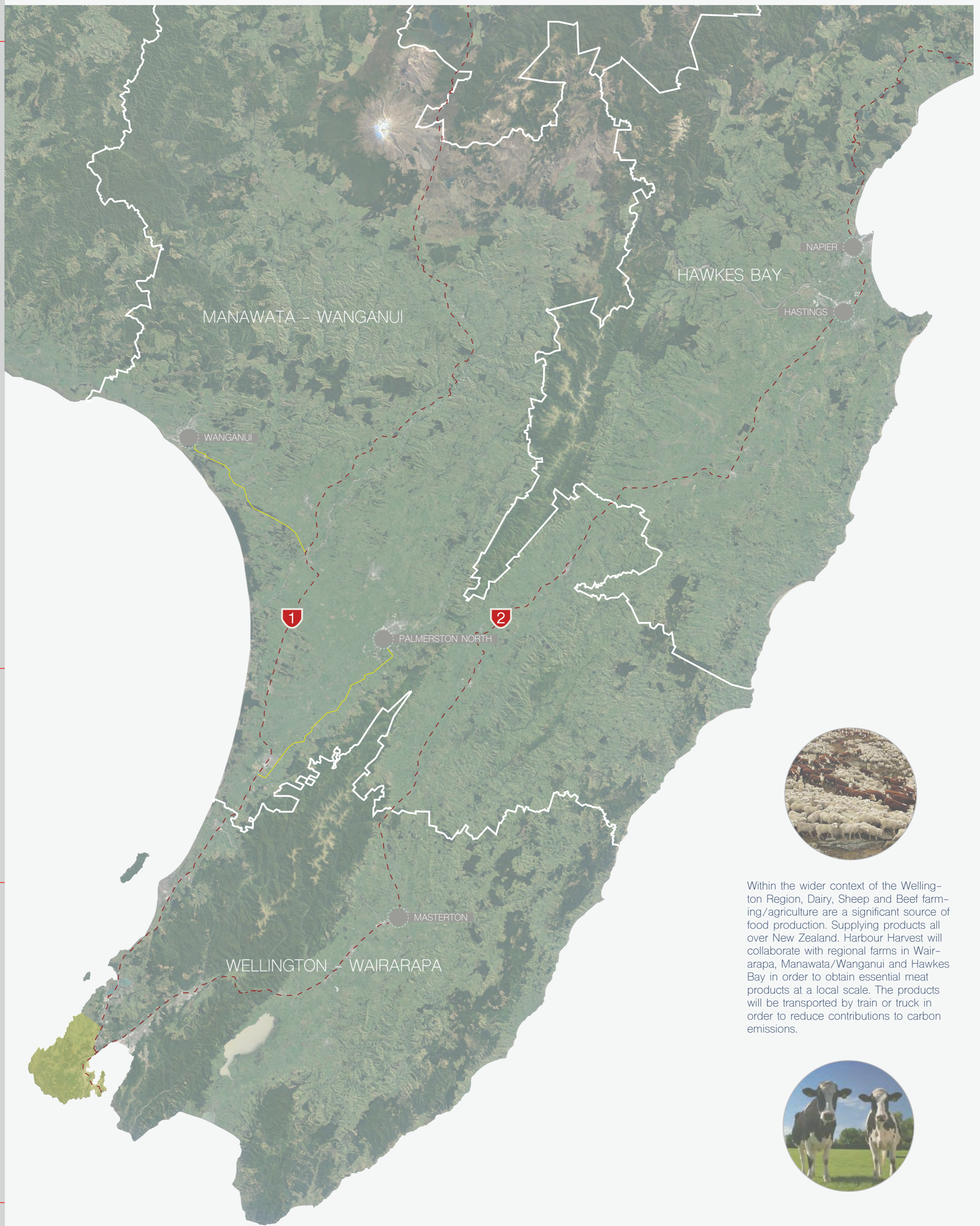
There are three public transport methods, (rail, inter-islander and local ferry) ensuring the site is easily accessible. Introducing markets/consumption zones within close distances to these areas will ensure healthy food options are accessible within the context of Wellington, along with encouraging locals to consume locally sourced products.

In regards to attracting visitors, there are a significant amount of landmarks and tourist attractions neighbouring the site. The Beehive, Parliament, the Old Government Building, Lambton quay, Waitangi park are just a few destinations close by that are well visited sites. Integrating particular elements from these sites will ensure Harbour Harvest connects with the surrounding environment.

Wellington's existing landscape incorporates a number of pedestrian based walkways and trails. There are three trails that are integrated within the Harbour Harvest site, where an extensions to existing trails will attract visitors to engage/interact within the site. The surrounding landscapes will reflect key characteristics that are significant to each individual trail, expanding on the pedestrian based form and incorporating the trails to drive further interaction.

### KEY

- Overlapping Wellington Trails
- Te Aro o Nga Tupuna Trail
- Old Shoreline Trail
- Maritime Trail
- Railway Line
- Predominant Roads



Within the wider context of the Wellington Region, Dairy, Sheep and Beef farming/agriculture are a significant source of food production. Supplying products all over New Zealand. Harbour Harvest will collaborate with regional farms in Wairarapa, Manawata/Wanganui and Hawkes Bay in order to obtain essential meat products at a local scale. The products will be transported by train or truck in order to reduce contributions to carbon emissions.



## DESIGN INTENT

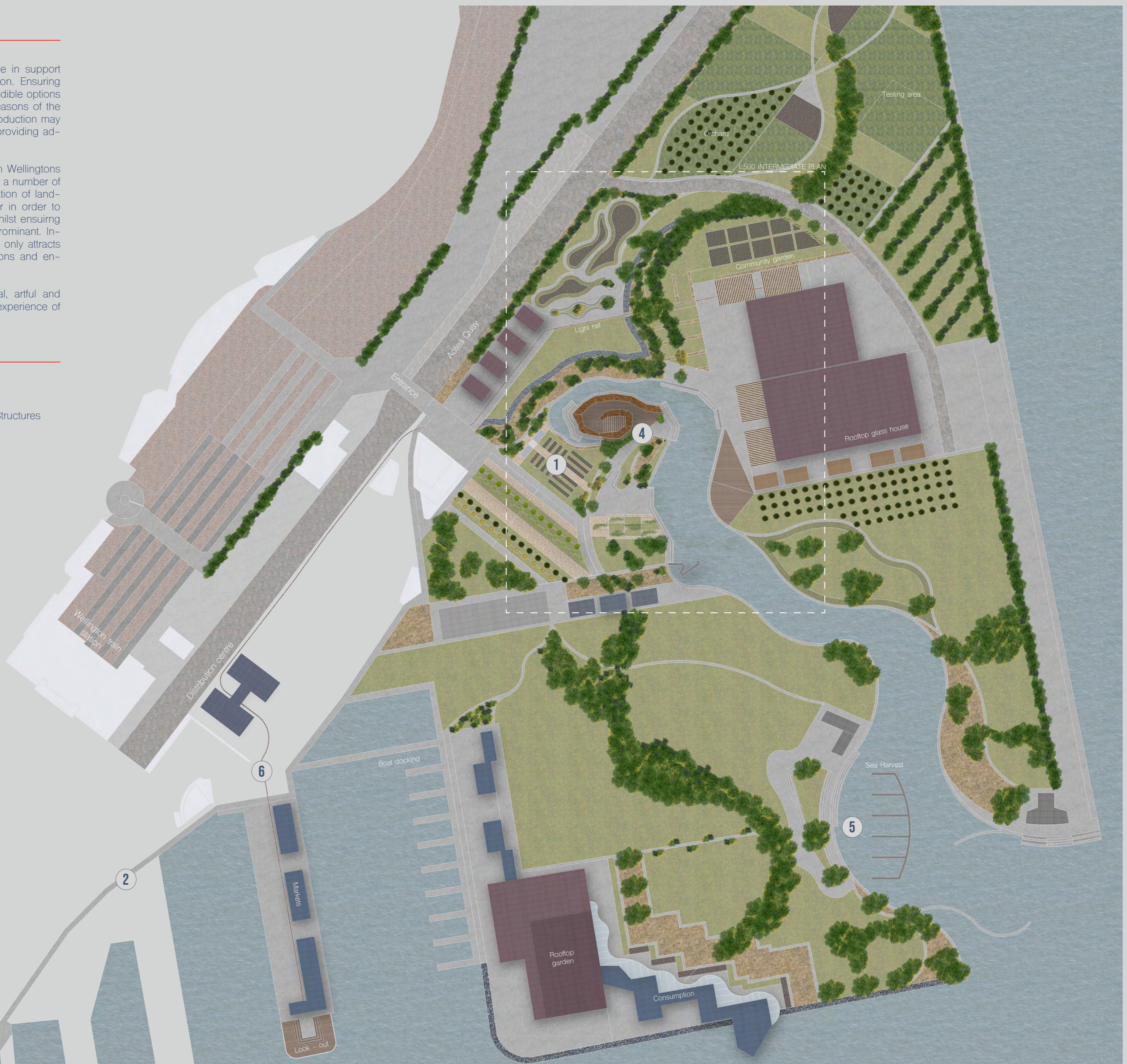
The waterfront landscape provide practical infrastructure in support of local food production, distribution and consumption. Ensuring essential elements are introduced in order to provide edible options in a number of different scales, throughout various seasons of the year. Temporary spaces will ensure that whilst the production may change through the seasons, so can the landscape, providing adaptable forms that directly relate to the site.

Harbour Harvest will enhance human interaction within Wellingtons waterfront, focusing on attracting visitors to interact with a number of food production methods and activities. The manipulation of land-forms, materials and vegetation will combine together in order to create an overall theme and story of the waterfront, whilst ensuring connections with the surrounding environment are prominent. Integrating Wellington Waterfront Trails into the site not only attracts visitors to the waterfront, but ensure strong connections and engagement are evident through the site.

The elements shared above will ensure a functional, artful and unique site will be introduced, supporting the overall experience of the visitor.

## MASTER PLAN KEY

- Proposed Production Structures
- Proposed Distribution / Consumption Structures
- Existing Consumption Structures
- Existing Structures



SCALE 1:2000 @ A1

0M 60M 120M 180M 240M

## LANDSCAPE LAYERS

Building network

Connectivity

Vegetation



## 1 COMMUNITY GARDENS

The space encourages visitors to interact with the landscape, connecting locals to the site. The community gardens are a space where Wellington locals/visitors can benefit from the nourishments of the landscape.

## 2 WELLINGTON TRAIL

Connecting the site with the surrounding waterfront trails, The Harbour Harvest site will act as an extension to the trails. Where the landscapes characteristics will adapt in order to support the trails.

## 3 LOOK - OUT

Elevated decking located on the edge of Wellingtons waterfront provide suitable infrastructure in support of a viewing platform/look-out. The look out provides visitors with a 180 degree view of Wellington harbour. The Look out will be a great destination for visitors who enjoy photography, as the lookout provide views towards the beautiful scenery within Wellington's surrounding context.

## 4 CENTRAL PLAZA

The central plaza will be a mixed-use environment, providing a variety of spaces for the distribution and consumption of locally grown products. Located within this space are restaurants, cafes and markets. The plaza is well connected to the surrounding site, enabling free flowing pedestrian/cyclists to easily access the site.

## 5 SEA WATER PRODUCTION

By incorporating the sea into the food production structure, Wellingtons waterfront will transform into a multi-productive landscape. Producing/harvesting a variety of locally sourced foods. Vertical plant walls, floating gardens and muscle farming are all integrated within the Harbour Harvest site, Human interaction and activities will be encouraged throughout the sea water production zones.

## 6 LIGHT RAIL TRANSPORTATION

The light rail transportation system is an extended form of the already existing rail network used within the industrial area. This will now be used for low impact food transportation, focusing on the delivery of freshly grown products to the distribution centre. Once the products arrive to the distribution centre, they will be cleaned/prepared, packaged and then transported to nearby markets/consumption zones.

## MASTER PLAN KEY

### PHASE ONE 1-2 YEARS.

Phase one will see the enhancement of the pedestrian/cycle networks in order get visitors interacting/using the site. Preparation will begin for the development of the industrial areas. By the end of the two year period the current occupants of the Northern industrial lot would have relocated, leading to the deconstruction of any unnecessary/irrelevant infrastructure.

### PHASE TWO 2-7 YEARS.

The beginning of the second phase will see the land begin to be prepared for development. Due to the site being located on industrial wastelands, progressively measures must be implemented in order to make the site safe for the sustainable future. Once completed, the development of 10 food production structures, 3 rooftop gardens and community gardens will begin.

### PHASE THREE 7-15 YEARS.

The landscape will continue to be developed further, focusing on the experiences of visitors. Firstly, the large/open/grass spaces will be introduced, along with native vegetation in a number of locations, beginning with the native vegetation spine. All features associated to public spaces (specifically recreational/event/open spaces, rail extension, lookout and farmers market) will be implemented, along with their necessary amenities.

### PHASE FOUR 15 YEARS & ONWARDS.

Phase four focuses on the overall management of the landscape overtime. The natural vegetation formations will require maintenance at least once a year, along with a general inspection of all other facilities. The community gardens will require monthly check ups in order to ensure they are sufficiently surviving.

## DESIGN INTENT

The waterfront landscape provide practical infrastructure in support of local food production, distribution and consumption. Ensuring essential elements are introduced in order to provide edible options in a number of different scales, throughout various seasons of the year. Temporary spaces will ensure that whilst the production may change through the seasons, so can the landscape, providing adaptable forms that directly relate to the site.

Harbour Harvest will enhance human interaction within Wellington's waterfront, focusing on attracting visitors to interact with a number of food production methods and activities. The manipulation of landforms, materials and vegetation will combine together in order to create an overall theme and story of the waterfront, whilst ensuring connections with the surrounding environment are prominent. Integrating Wellington Waterfront Trails into the site not only attracts visitors to the waterfront, but ensure strong connections and engagement are evident through the site.

The elements shared above will ensure a functional, artful and unique site will be introduced, supporting the overall experience of the visitor.

### 1 TRADITIONAL FOOD PRODUCTION

Adjacent to the extension of Te Ara O Nga Tupuna trail are vegetable gardens that are developed, maintained and grown using traditional growing/harvesting methods. Visitors will be able to interact with the landscape, completing guided activities that were once an essential element to our ancestors day to day life.

### 2 KUMARA MOUNDS

Kumara are a popular specie to New Zealand, providing strong cultural/historic relationships throughout the nation. In order for kumara (to grow successfully, small mounds are created from loose soil to attract heat. Elaborating on this idea, the mra Kumara are positioned on top of larger mounds for aesthetic effect. Surrounding vegetation will act as protection for poor weather conditions.

### 3 ROOFTOP GLASS HOUSE

The large, rooftop glass houses are a functional structure within the site that enables fruit and vegetable crops to be produced year-round at a commercial scale. The building facade will primarily be glass to attract heat and sunlight, whilst also enhancing the aesthetic characteristics of the landscape. Visitors are encouraged to interact with the educational markets beneath, where individuals can enhance their knowledge surrounding the food they are consuming and broaden their perspectives on Harbour Harvest's contribution to global issue through urban agriculture.

### 4 COMMUNITY GARDENS

Connecting locals to the site, the community gardens are a space where Wellington locals or visitors can benefit from the nourishment of the landscape. Corten steel pillars will educate individuals on the required information relating to each species harvest, ensuring educational elements are provided. Adjacent to the gardens are raised, shaded lawns, providing a reflective public space.

### 5 ELEVATED ORCHARD

As you enter the Harbour Harvest site through the predominant entranceway, you are introduced to a sloped terrain where a number of fruit trees are placed. The seasonal landscape allows for the space to be a functional fruit production source throughout harvesting seasons. Where visitors will walk through the slopes and benefit from the grown fruits.

### 6 CONTAINER PRODUCTION

Located on the waters edge are a number of recycled shipping container frames, providing a mixed-use location in support of the production and distribution of fruit, vegetables and plants. Visitors will have the option of consuming products within a productive space, witnessing a variety of species develop in the surrounding landscape.

### 7 CENTRAL PLAZA

The unique shaped central plaza is a mixed-use structure providing a space focusing upon the consumption of food. The waterfront structure consists of a number of restaurants, cafés, market stalls and will act as a temporary event/function space, within the heart of the Harbour Harvest site. An abundance of open walls and glass panels ensure the plaza is accessible/appealing to visitors.

### 8 SHELTERED WALK & MARKETS

The sheltered walkway/market space provide visitors with the opportunity to purchase and consume locally produced products, grown within rooftop glass houses. Encouraging consumers to look through glass panels into the production spaces, becoming a safe educational zone. This functional space will ensure people are engaged with the practical elements involved at Harbour Harvest.

### 9 BIOLUMINESCENT PLANKTON

Beneath the Waters surface are introduced bioluminescent plankton species, incorporated to add further aesthetic elements to the site. Along with garden lights, street lights and overhanging lights, the plankton specie will help contribute illuminate the landscape, ensuring the site is well lit, functional and safe throughout all hours.

### 10 VIEWING PLATFORM

The viewing platform will provide a space 3 meters above the excavated water. Enabling viewers to access full 360 degree of the landscape beneath them. The structure will have secure fencing ensuring the safety of individuals utilizing the structure. The platform will be a key destination for individuals exploiting Wellington's waterfront trails, attracting photographers and site seekers.



#### SECTION A A 1:250 @ A1

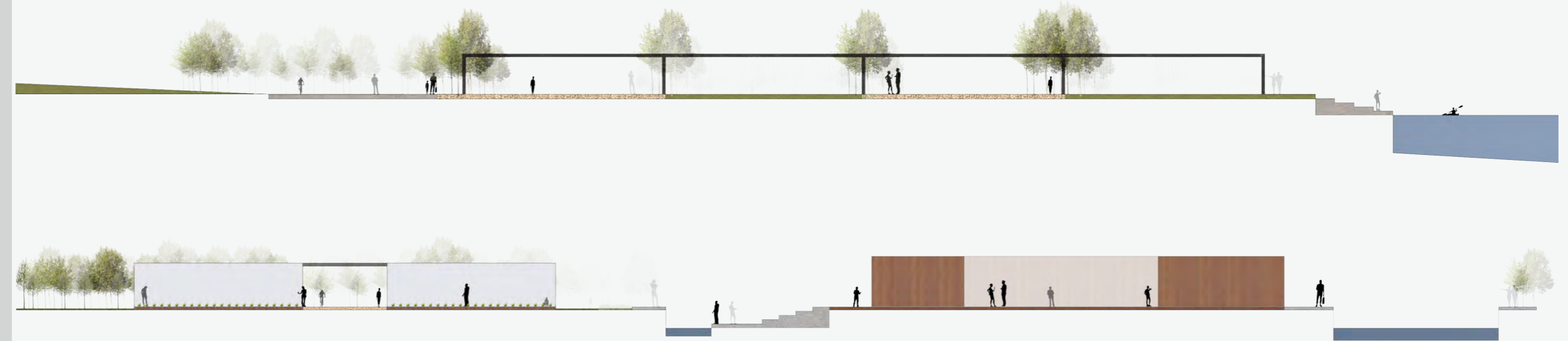
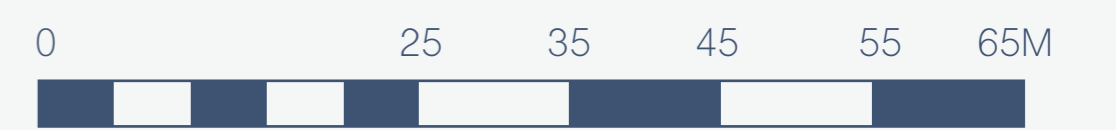
Section A A provides an insight towards the sites relationship between vegetation, food production, activities and landforms. The cross section demonstrates an alternative perspective surrounding the industrial character of the site, whilst also demonstrating a number of level changes within such a significant production/consumption feature within the Harbour Harvest site.

#### SECTION B B 1:250 @ A1

Section B B Provides an insight towards the relationship between food production, consumption and activities within the heart of the site. Community gardens are located between a number of structures, dense vegetation and elevated landscape, ensuring the species are protected from harsh weather conditions. The section also demonstrates human activity/interaction within the landscape.



SCALE 1:500 @ A1



## DESIGN INTENT:

By introducing flora that is existing or endemic within the surrounding landscape will ensure native vegetation is introduced within an environment that currently, severely lacks any form of greenery. Re-discovering historic connections with the wider context of Wellington will involve selecting indigenous species that can withstand/adapt to the harsh coastal conditions, reflecting an ecosystem of the past.

Introduced fruit/vegetable species at both community and commercial scales will be well protected/sheltered by surrounding vegetation. Buffering out salt-laden winds and other hazardous weather conditions, preventing harm and effects associated to the growth and quality of the exterior food production.

The introduced green network will integrate with the surrounding site features, collaborating together in order to make a productive/functional/artful landscape, encouraging visitors to interact and connect on Wellington's waterfront.

## PLANTING FACTORS

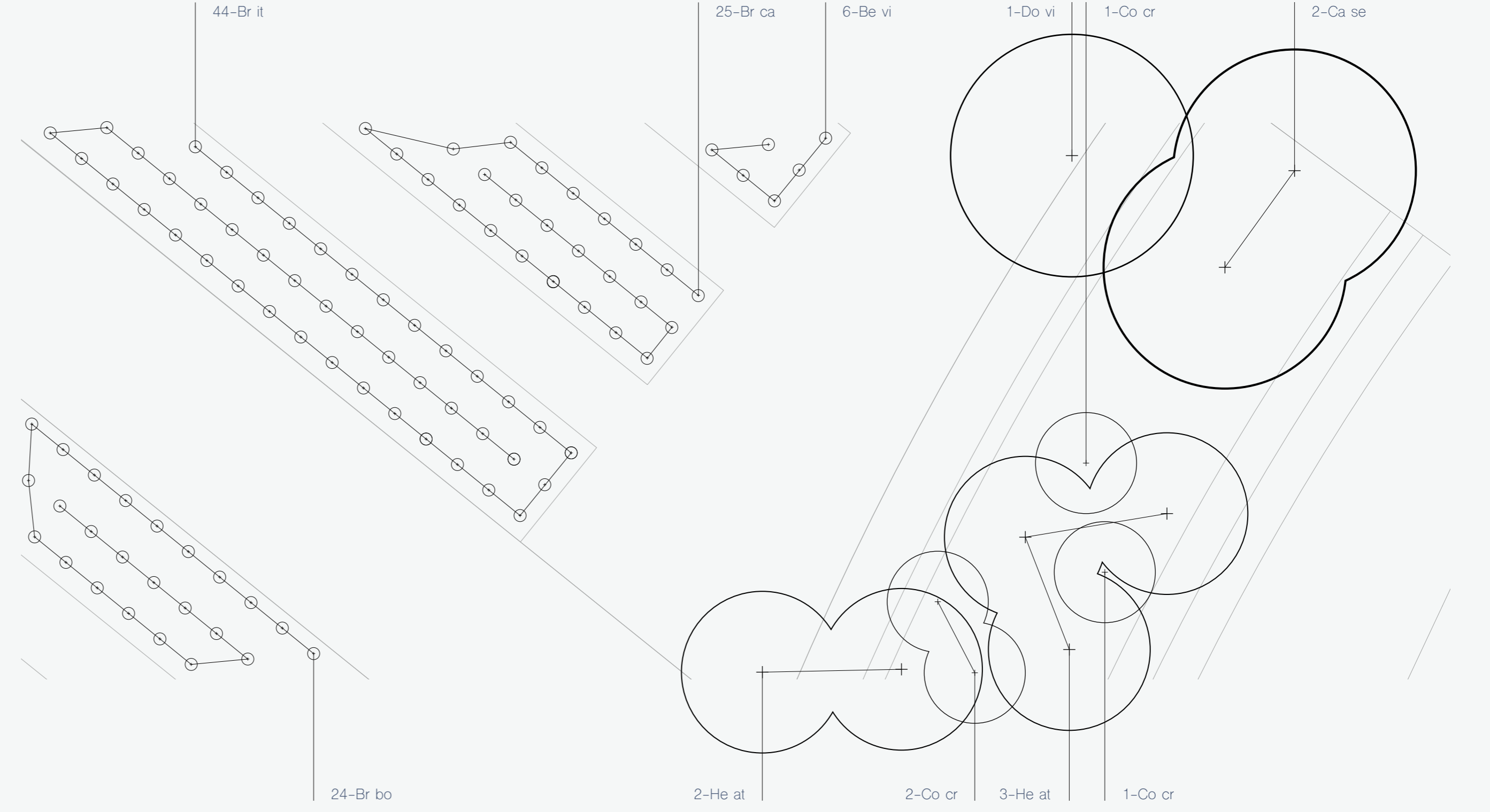
Wellington's past landscape consisted of wind and salt resistant shrub-land within open, rocky and steep embankments. Within Wellington's more sheltered environments, a mixture of forest trees that adapted to the unique terrain and stresses of various weather conditions were present.

Wellington waterfront is a unique environment where unpredictable weather conditions strongly dictate the successfulness of vegetation. Strong, salt-laden winds can cause physical damage to plant. In situations of smaller, less hardy and edible vegetation, shelter will be important to ensure fortunate plant growth as strong winds may also cause plants to dry out. Therefore, the planting selection along with placement (specifically regarding food production) is key for the overall success of the vegetation within the Wellington waterfront site.

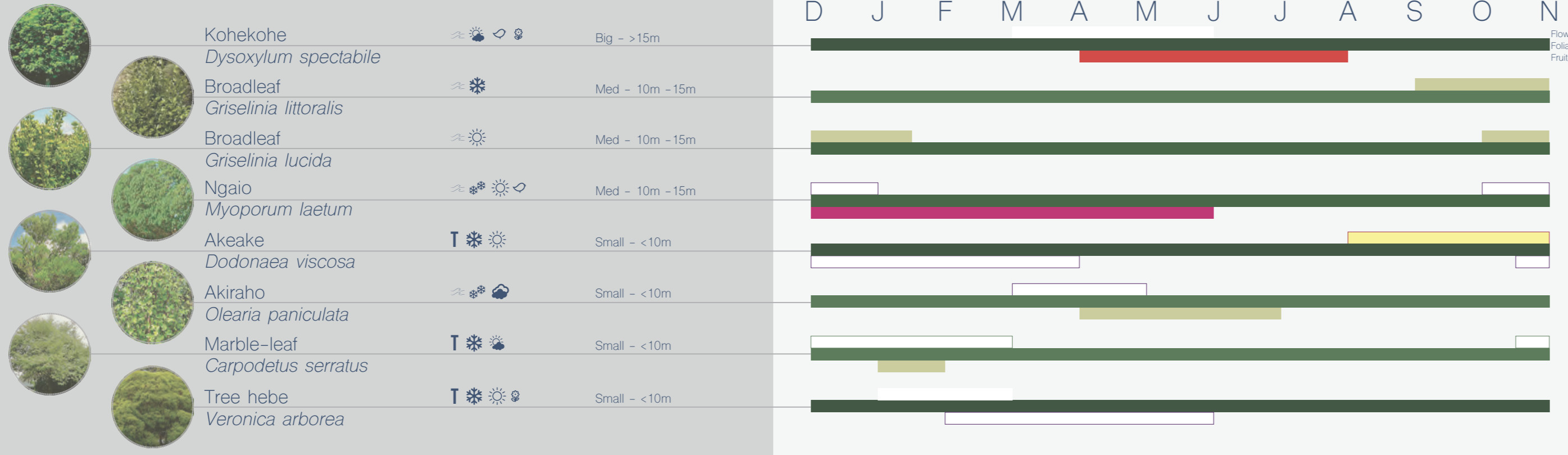
## PLANTING CONDITIONS

- T** Tough
- Frost - hardy
- Frost - hardy (when mature)
- Full sun
- Part shade
- Full shade
- Coastal
- Attractive flowers/fruit
- Attractive to birds.

## PLANTING PLAN 1:100 @ A1



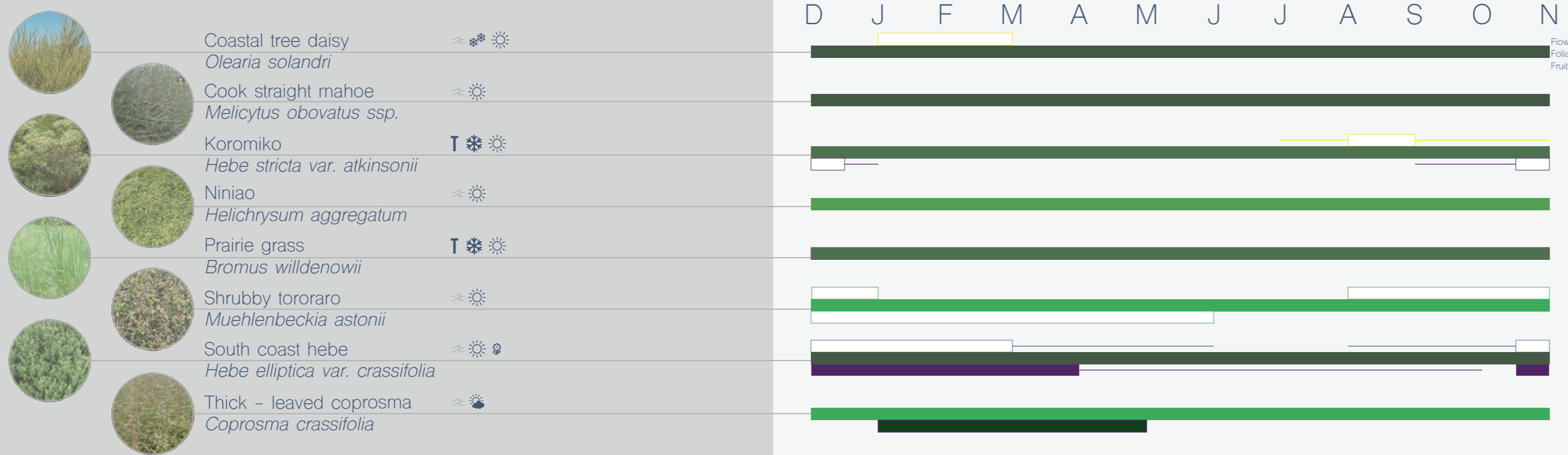
## NATIVE COASTAL VEGETATION / NATIVE SPINE



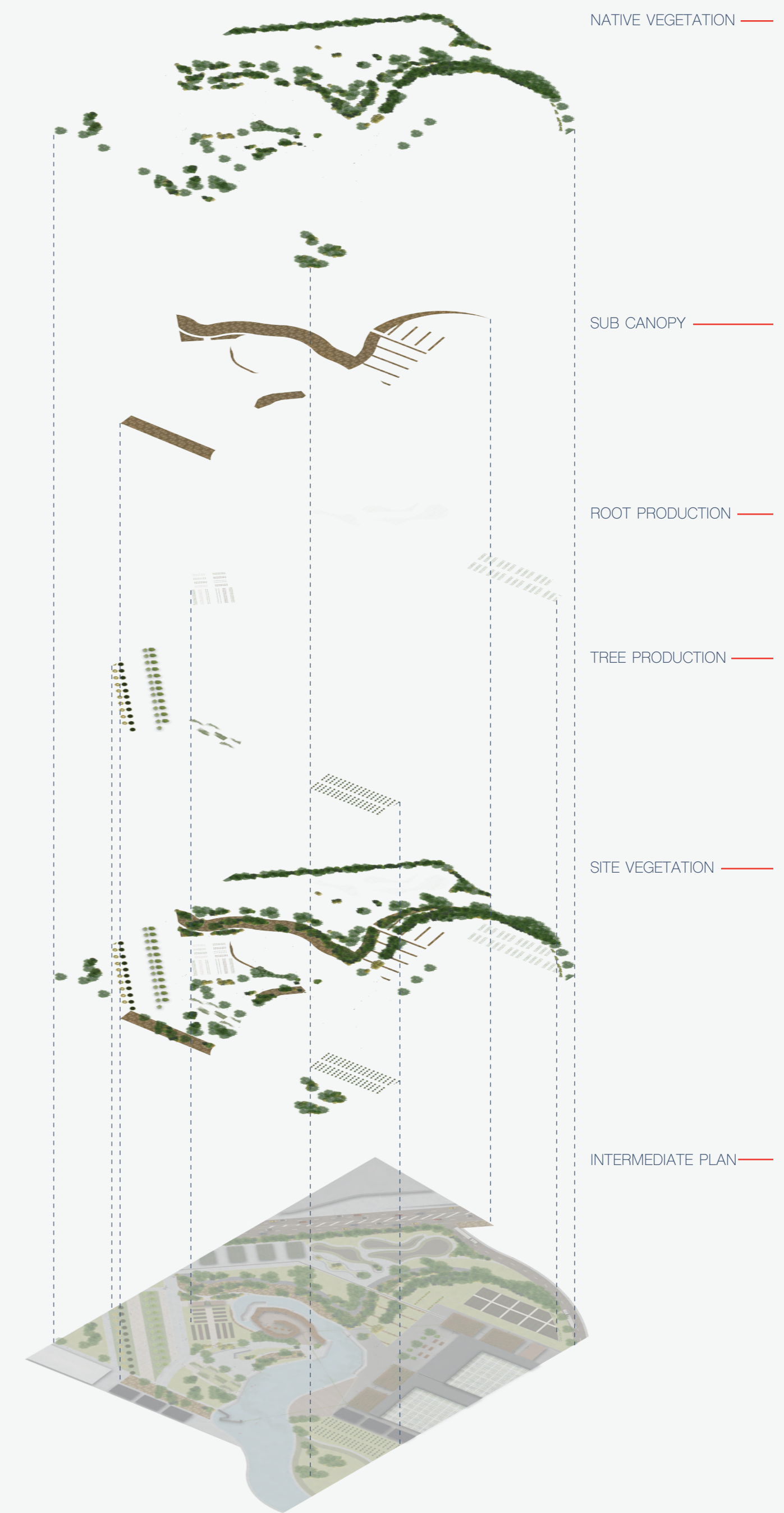
## PLANTING SCHEDULE

ID	QTY	LATIN NAME	COMMON NAME	SIZE
Be vi	6	Beta vulgaris subsp. vulgaris	Silverbeat	Seed
Br bo	24	Brassica oleracea var. botrytis	Cauliflower	Seed
Br ca	25	Brassica oleracea var. capitata	Cabbage	Seed
Br it	44	Brassica oleracea var. italica	Broccoli	Seed
Ca se	2	Carpodetus serratus	Marble-leaf	Pb 12
Co cr	4	Coprosma crassifolia	Thick-leaved coprosma	Pb 4
Do vi	1	Dodonaea viscosa	Akeake	Pb 4
He at	5	Hebe stricta var. atkinsonii	Koromiko	Pb 4

## SUB CANOPY / GROUND COVER



## VEGETATION ZONES



## COMMERCIAL & COMMUNITY PRODUCTION



The Vegetation within the landscape is selected in order to support the production of fruit and vegetables within the site. The natural vegetation spine runs through the site, strategically planted in order to mitigate effects from extreme weather conditions. Specifically protecting crops/plants from the prevailing North and South winds. Parallel to the site is one of Wellington city's busiest roads (Aotea quay), in order to reduce noise pollution and enhance the safety within the site. Dense natural vegetation will be planted in order to create a wind/noise/safety buffer, acting as a screen to the site. A combination of root and tree food production will be represented on site, offering locally grown products in close proximity to Wellington locals, commuters and visitors.

## DESIGN INTENT:

Integrating the current industrial theme of Wellington waterfront was key in regards to the inspiration of hard materials within this site. Due to a strong focus on the production, distribution and consumption of food related products, various opportunities were established in order to create a functional landscape that strongly connects with the surrounding character of the site.

Two categories (Form and Industrial Material) inspired by Wellington waterfront's existing landscape were used to represent the hard materials introduced within the Harbour Harvest site. This not only enhances individual connections to the landscape, but allows for a unique, distinguishable character to flourish.

Integrating urban agriculture with Wellington's existing forms and industrial character will ensure the combination of natural processes within an urban setting will create a functional/artful landscape.

## CONTAINER PRODUCTION:



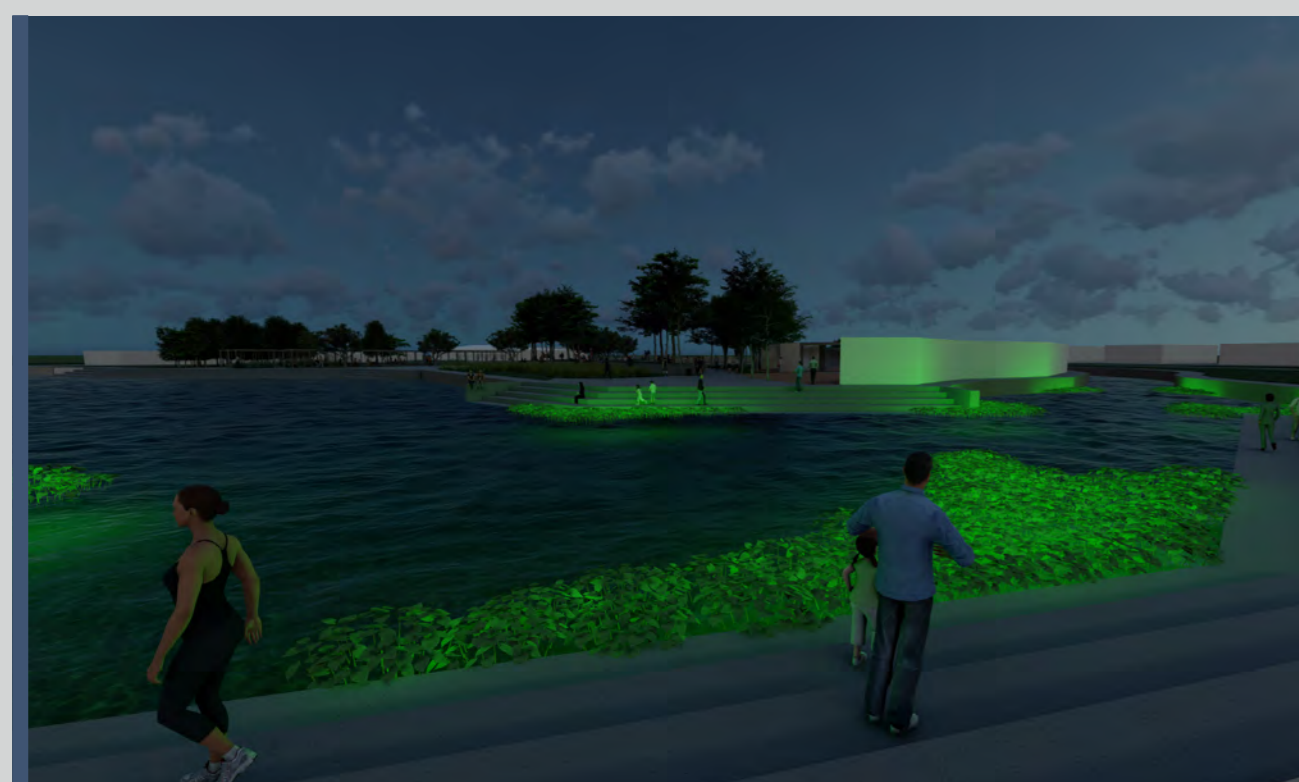
The container features within the landscape provide a mixed use location in relation to the production and distribution of food related products. This feature directly relates to the industrial forms and materials currently evident within Wellington's existing landscape. Connecting to the current land uses evident at Wellington's shipping doc. The overall straight, yet grid form seen within the container production, mimic the adjustable, grid formation of existing shipping containers within the current landscape. The combination of timber and steel related features are also evident within form. Being used as common materials contributing towards the formation of chairs, tables and site furniture. Whilst contributing to the unique industrial theme and atmosphere of the site.

## ELEVATED LAWN AND SEATS



The elevated lawn feature provides a central shaded space, intended as an environment where visitors overlook the excavated harbour, or community gardens. The feature uses elements of Wellington's skyline form, displayed by various heights formed by the changes between ground-level, steps, seats, and the raised lawn. The changes in height level are combined with a unique shape consisting of straight, angular edges influenced by the human modifications introduced due to reclaimed land, which the waterfront site is positioned on. Free growing grasses and ground-covers are also evident in this landscape, reflecting the overall food strategy of Harbour Harvest, along with mimicking the natural vegetation/shrubs evident within the hills protruding in the background.

## EXCAVATED WATERS EDGE



The excavated waters edge is a significant feature of Harbour Harvest's site, being a key destination for food production, recreational activities, human interaction and enhancing biodiversity. The river-like extension of Wellington harbour travels through the site, constructed with both straight and circular edges. The combination of linear and annular edges are derived from Wellington harbours existing form. Which consists of planned out, straight edged - reclaimed land as well as free flowing, natural edges. bioluminescent plankton is also integrated within the site, reflecting a natural process that is often evident surrounding Wellington waterfront, whilst contributing/enhancing the overall aesthetics of the site.

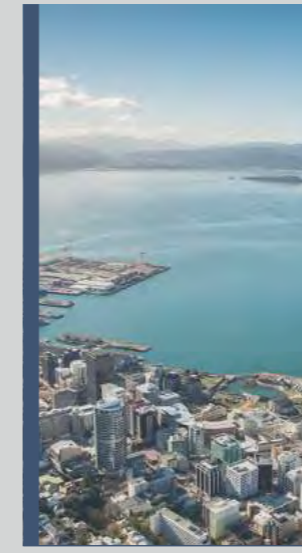
## FORM:

WELLINGTON SKYLINE



Wellington is distinguished by two prominent landforms that share both natural and human modified elements. Wellington skyline is dominated by large scaled, straight buildings, with rolling hills projecting in the background. The skyline integrates with Wellington harbour, where a combination of planned, straight reclaimed land contrasts with the natural flowing curves of the shoreline. The combination of natural landforms, human modification and significant height changes are key elements contributing to the overall form and atmosphere within the landscape.

WELLINGTON HARBOUR



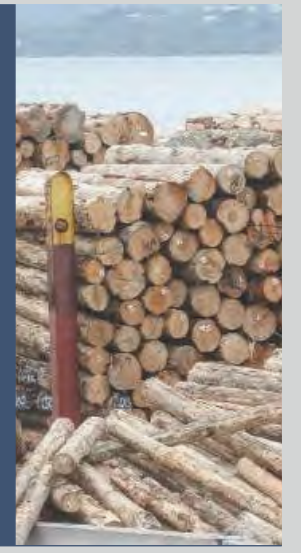
## INDUSTRIAL MATERIAL:

SHIPPING CONTAINERS



Wellington waterfront has shared a significantly strong relationship with industrial characteristics throughout history. The landscapes current land-use ensures the shipping docs get utilized, becoming a dominant site displaying various forms of industrial-works. Consisting of colourful tower-like formations, predominantly comprised of shipping containers and timber logs. Due to Wellington's current and past connection with industrial elements, this attribute has become a leading element in regards to the overall character and experience of the Harbour Harvest site. Therefore, Industrial formations, textures, colours and characteristics will be highlighted throughout the site

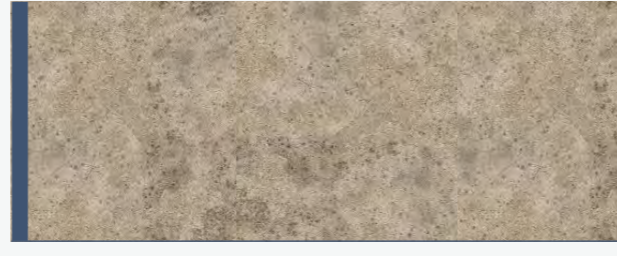
TIMBER WORKS



## MATERIALS PALLET



**EXPOSED AGGREGATE CONCRETE**  
(10-40mm round).  
**USE:** Paving, pathway and step surfaces.  
**FINISH:** Black oxide colour and a selection of Greywacke.  
The surface incorporates natural characteristics in order to produce a durable, low maintenance, non-slip finish. Stony textures and a glossy looking finish ensure the surface provide aesthetic and functional elements.  
**LOCAL CONNECTION:** The surface reflects the rocky characteristics evident within Wellington's 'natural' shoreline, re-connecting the site with strong elements that are currently absent.



**CONCRETE (coloured)**  
U2/U3.  
**USE:** Paving, pathways and step surfaces.  
**FINISH:** Medium Trowel - Light brown/grey.  
The concrete is prepared/ finished to a particular extent in order to ensure the surface provides a durable, non-slip, low maintenance surface. Suitable surface within heavily used environments.  
**LOCAL CONNECTION:** The surfaces colour reflects the sites current land use as an industrial landscape, directly reflecting the colours associated to the timber-works.



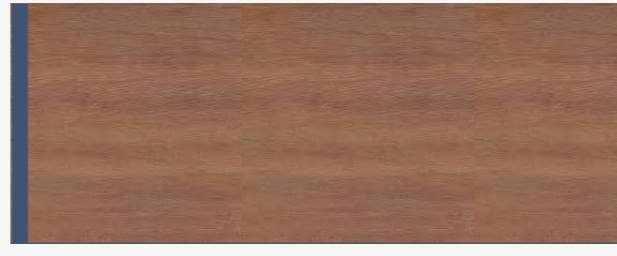
**CLASSIC STONE PAVING**  
300 x 300mm.  
**USE:** Paving  
**FINISH:** This surface is constructed with permeable paving for pedestrian and vehicle surfaces, enabling the infiltration of storm-water runoff. The surface provides a durable, non-slip, low maintenance surface, suitable for heavily used pedestrian environments.  
**LOCAL CONNECTION:** The classic stone paving is implemented to reflect the materials evident within the surrounding context of Wellington. Specifically influenced by a number of pedestrians based public spaces.



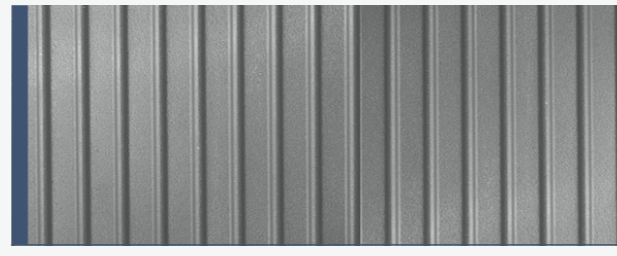
**GREYSTONE CHIPS**  
10mm-13mm.  
**USE:** Pathways and container surface.  
**FINISH:** Small chips, compacted down.  
Gravel is an absorbent material which allows water to naturally run drain away, with no need for additional infrastructure. The surface allows for traction, whilst also requiring minimal maintenance.  
**LOCAL CONNECTION:** The surface reflects the rocky characteristics evident within Wellington's 'natural' shoreline. Whilst also demonstrating surface elements distinct within the neighbouring Waitangi Park site.



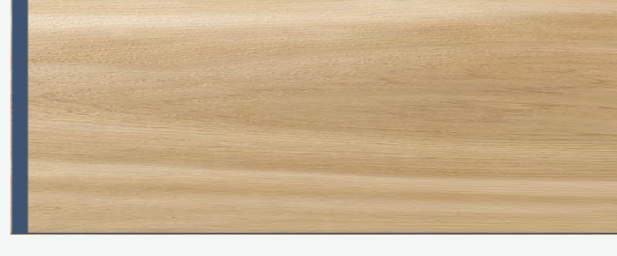
**AWATOTO STONE**  
20-40mm.  
**USE:** Ground-cover, free-flowing connectivity.  
**FINISH:** Mixture of 20-40mm chips, compacted down.  
Awatoto stone is an permeable surface, providing a low maintenance material that enables the infiltration of storm-water runoff.  
**LOCAL CONNECTION:** The surface connects Wellington to regional neighbours Hawkes Bay, reflecting the natural materials significant to that region. Including local yet regional elements also reflect the overall strategy of Harbour Harvest.



**TONKA HEARTWOOD TIMBER (FSC100%)**  
150mm.  
**USE:** Decking, seating and edging  
**FINISH:** H3.2 treated timber.  
Tonka Heartwood timber is an imported species of timber, providing a fine and grain interlocked surface with a waxy/oily texture feel. The timber is an exceptional surface within a coastal landscape.  
**LOCAL CONNECTION:** Wellington waterfront was previously home to one of the largest ports in New Zealand. Introducing an imported timber specie reflects Wellington's industrial past through the timbers origin and colour.



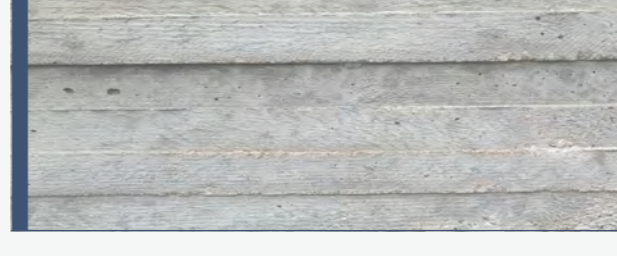
**COLOURSTEEL CORRUGATED IRON**  
0.55-0.40mm.  
**USE:** Roofing  
**FINISH:** Five Rib, touchstone colour.  
Coloursteel corrugated iron roofing is constructed to withstand extreme weather elements, resistant to corrosion. The roofing material is an exceptional surface within Wellington's coastal environment.  
**LOCAL CONNECTION:** The grey touchstone colour of the roofing is set to reflect/blend into the roofing evident within the urban context surrounding the site.



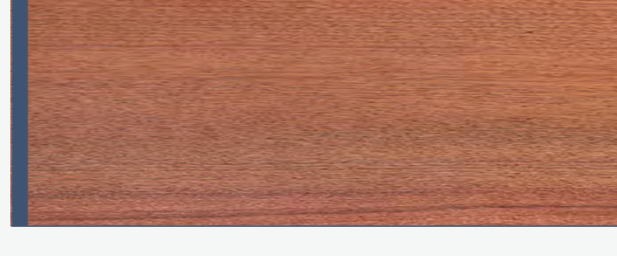
**YELLOW CEDAR TIMBER**  
5x2500x1200.  
**USE:** Shelter and aesthetics.  
**FINISH:** H3.2 treated timber.  
Yellow Cedar is an imported timber species, providing a pale yellow coloured surface, along with a straight grained, fine texture. The texture is an exceptional choice for site features not contacting ground surfaces.  
**LOCAL CONNECTION:** Due to the material not being a native specie, the timber reflects the historic industrial/port land uses evident within Wellington's past relationship with the waterfront.



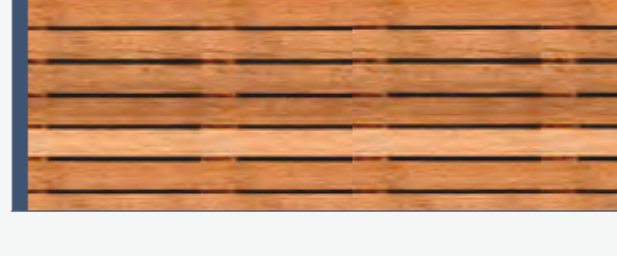
**CONTAINER FRAME**  
2430x2590x12200mm.  
**USE:** Production, consumption and aesthetics.  
**FINISH:** cut-out container frame, coated with touchstone colour.  
The Container will be stripped down to it's framework, enabling pedestrian access through the form. A glass roof will be installed to protect visitors from weather, as well as creating a micro-climate for food production.  
**LOCAL CONNECTION:** A significant portion of Wellington's waterfront is currently occupied by industrial shipping containers. This is reflected within the landscape with the incorporation of practical container frames.



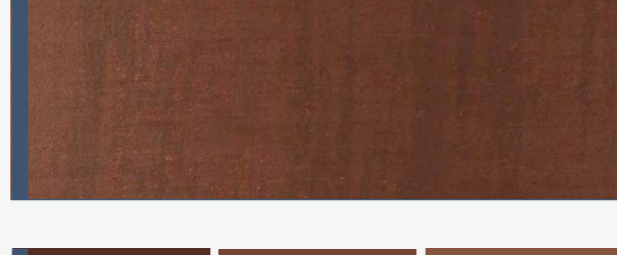
**CONCRETE (texture)**  
U10 (F6).  
**USE:** Edges.  
**FINISH:** Board formed concrete texture.  
Board formed concrete texture uses incorporated the imprint timber creates, generated by lightly breaking up concrete surfaces to raise the grain. The textured look is incorporated in order to enhance the aesthetic elements of excavated/raised landforms.  
**LOCAL CONNECTION:** Board formed concrete textures directly reflect general textures evident within industrial landscapes.



**RATA TIMBER**  
5x2500x1200.  
**USE:** Shelter and edging.  
**FINISH:** H5 treated timber, varnished with a light brown coating.  
Rata is a locally sourced, native timber. The material is a durable, low maintenance product. The light brown coating is set to enhance the richness of site colours, contrasting with the surrounding site.  
**LOCAL CONNECTION:** The incorporation of Rata timber is set to reflect the timber-works currently evident within the current landscape. Whilst also sharing connections with the protruding hills in the backdrop of the site.



**TIMBER PALLETES**  
1200x1000  
**USE:** Site furniture, garden boxes.  
**FINISH:** Heat treated timber.  
Timber pallets are a cheap, yet aesthetically pleasing material in regards to site furniture. The material is strong, with viable/physical textures.  
**LOCAL CONNECTION:** The recycled local timber pallets are sourced from local industrial businesses. Directly relating to the industrial activity currently present on site. Connecting visitors to local activities and industrial character evident within the city.

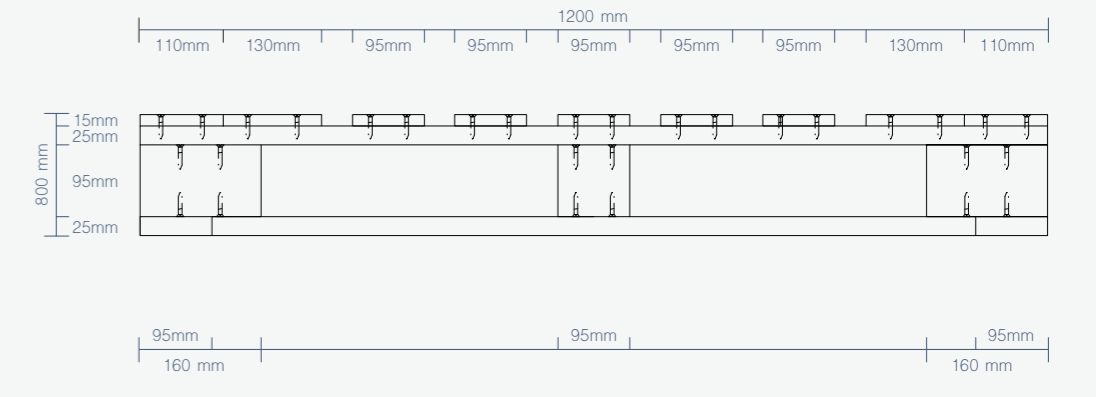


**CORTEN STEEL**  
5x2500x1200  
**USE:** Sign-age, aesthetics.  
**FINISH:** Weathered/smooth surface finish.  
Corten steel is a simple, yet effective material for sign-age and aesthetic features. Eliminating maintenance related issues.  
**LOCAL CONNECTION:** The steel material directly relates to the industrial character of Wellington waterfront. Connecting the site with past land uses that were once prominent within the landscape and surrounding context of the site.

## SPECIFICATIONS

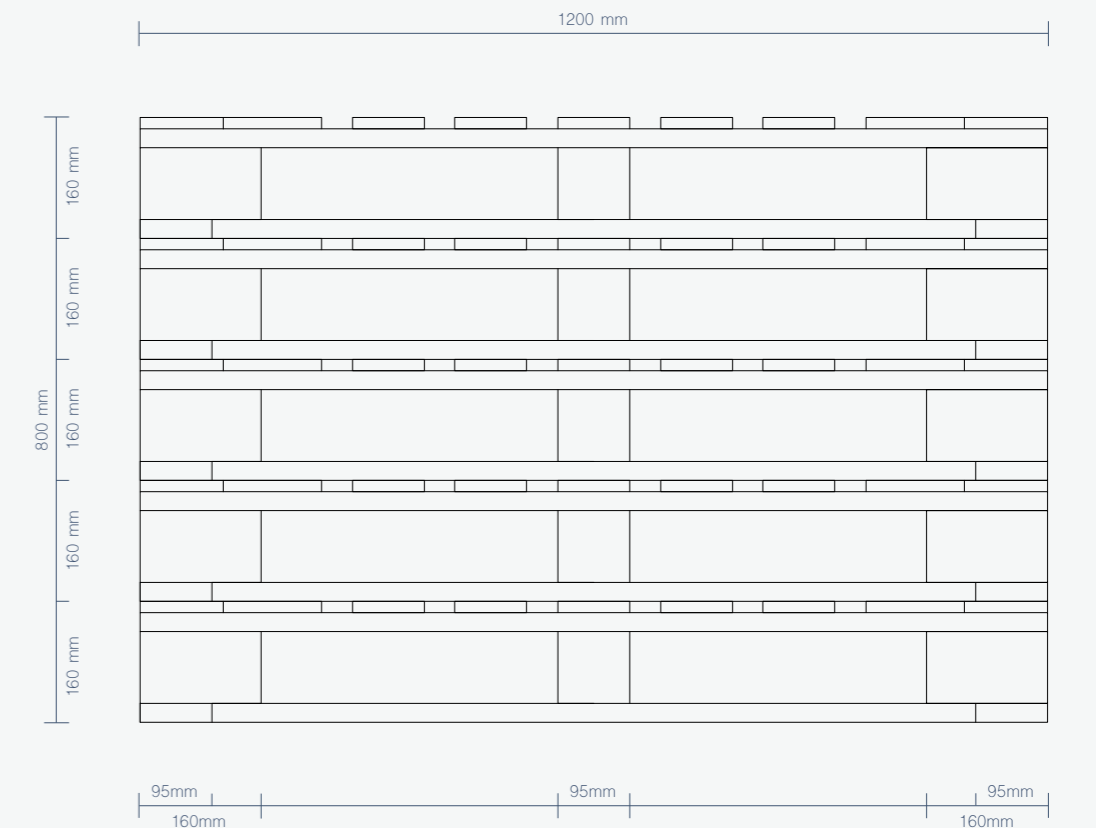
### TIMBER PALLET

SINGLE PALLET 1:10



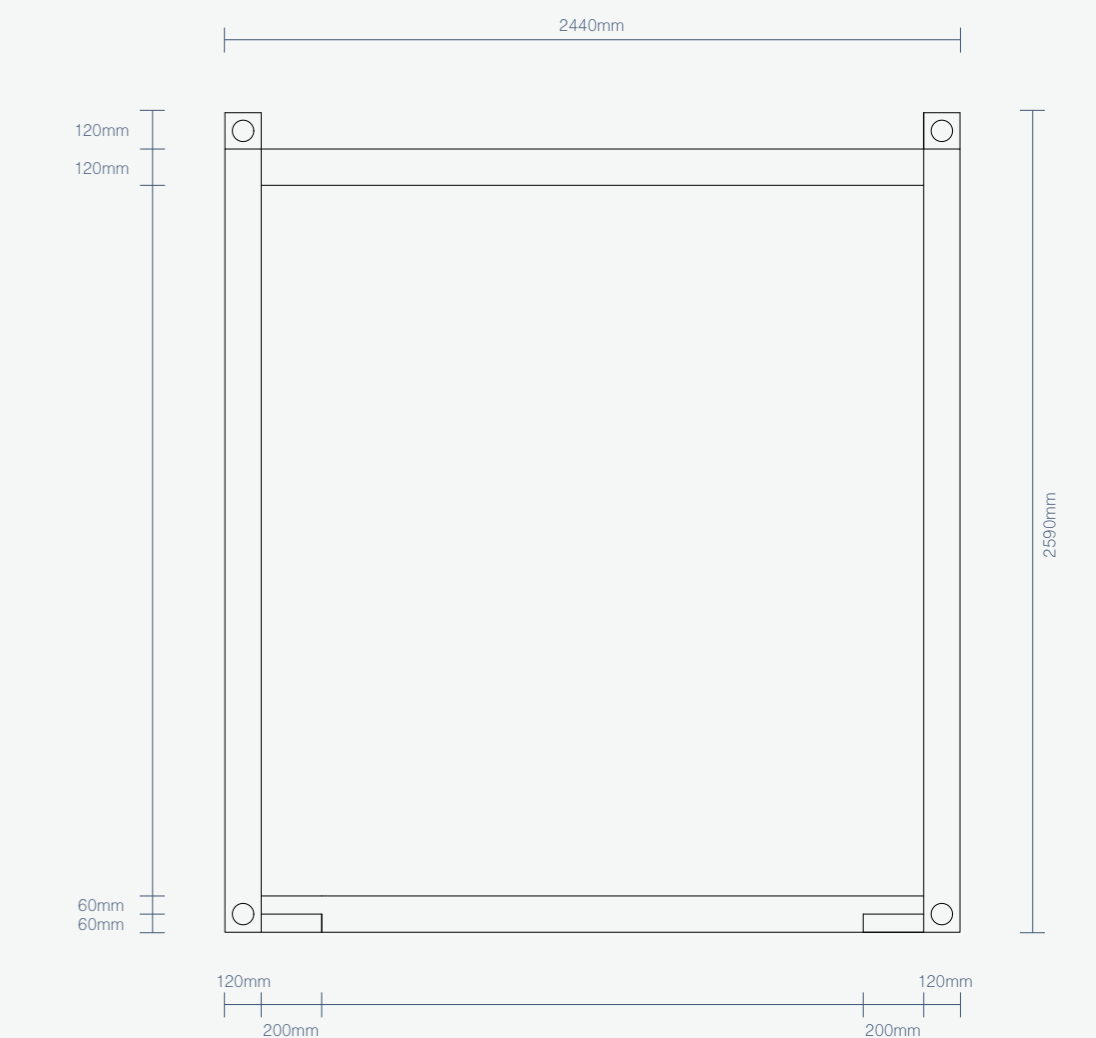
### TIMBER PALLET

SIDE VIEW 1:10



### CONTAINER

FRONT VIEW 1:125



## LOCAL CONNECTIONS



Influenced by generic industrial textures, This perspective reflects common colours and forms evident within the surrounding environment. The integration of board formed concrete connect with a number of neighbouring structures, whilst also reflecting common industrial textures.

Greystone chips

Board formed concrete texture

Exposed aggregate concrete



Influenced by the rocky characteristics evident within Wellington's 'natural' shoreline. Greystone chips have been incorporated into the site, connecting the sites surface elements towards the wider context of Wellington. The surface directly contributes towards the overall industrial theme.

Board formed concrete texture

Greystone chips

Exposed aggregate concrete



The site is situated on re-claimed land, with limited connections to Wellington's past. The integration of exposed aggregate concrete will ensure a strong connection is re-established, reflecting the shorelines previous surface.

Exposed aggregate concrete

Greystone chips

Jacob Marriner – 1130042

Image Reference List – Major Design 2020 – LASC 409

Regional Plan:

Dairy Farm - <https://fishandgame.org.nz/about/f-and-g-position-statements/dairy-farming-and-the-environment/>

Sheep and Beef - <https://teara.govt.nz/en/photograph/17344/herefords-and-merinos-being-mustered>

Planting Strategy:

Native Vegetation:

*Dysoxylum spectabile* - <https://www.nzpcn.org.nz/flora/species/dysoxylum-spectabile/>

*Griselinia littoralis* - <https://www.proseed.co.nz/cart/natives-grasses/griselinia-littoralis>

*Griselinia lucida* - <https://www.pinterest.nz/pin/648729521297606587/>

*Myoporum laetum* - [https://commons.wikimedia.org/wiki/File:Myoporum\\_laetum\\_kz4.jpg](https://commons.wikimedia.org/wiki/File:Myoporum_laetum_kz4.jpg)

*Dodonaea viscosa* - <https://leafland.co.nz/trees/dodonaea-viscosa-akeake-hopbush/>

*Olearia paniculata* - <https://www.pbase.com/edgegallery/image/50376594>

*Carpodetus serratus* - <https://leafland.co.nz/trees/carpodetus-serratus-putaputaweta-marbleleaf/>

*Veronica arborea* - <https://davesgarden.com/guides/pf/showimage/62630/>

Sub Canopy/Ground-cover:

*Olearia solandri* - <http://www.planthawkesbay.co.nz/product/olearia-solandri-coastal-tree-daisy/>

*Meliccytus obovatus* ssp - <http://www.o2landscapes.com/pages/pp-meliccytus.php>

*Hebe stricta* var. *atkinsonii* - <https://www.citscihub.nz/>

Phil\_Bendle\_Collection: *Hebe salicifolia*\_(Koromiko)

*Helichrysum aggregatum* –

[https://www.citscihub.nz/Phil\\_Bendle\\_Collection:Helichrysum\\_lanceolatum\\_\(Niniaio\)](https://www.citscihub.nz/Phil_Bendle_Collection:Helichrysum_lanceolatum_(Niniaio))

*Bromus willdenowii* - <https://www.nzpcn.org.nz/flora/species/bromus-willdenowii/>

*Muehlenbeckia astonii* - <http://www.aucklandbotanicgardens.co.nz/plants-for-auckland/plants/muehlenbeckia-astonii/>

*Hebe elliptica* var. *crassifolia* - <http://treesforcanterbury.blogspot.com/2019/04/veronica-hebe-elliptica-kokomuka-or.html>

*Coprosma crassifolia* - <https://www.kauriparknurseries.co.nz/plants/coprosma-crassifolia/>

Commercial and Community Production:

*Malus* sp. - <https://thisnzlife.co.nz/this-new-zealand-couple-are-on-a-mission-to-save-heritage-apple-trees-plus-the-best-apples-by-new-zealand-region/>

*Asparagus officinalis* - <https://extension.umd.edu/hgic/topics/asparagus>

*Brassica oleracea* var. *italica* - <https://www.gardeningknowhow.com/edible/vegetables/broccoli/how-to-grow-broccoli.htm>

*Brassica oleracea* var. *capitata* - <https://www.gardeningknowhow.com/edible/vegetables/cabbage/cabbage-head-formation.htm>

*Daucus carota* subsp. *Satirus* - <https://www.hgtv.com/outdoors/flowers-and-plants/vegetables/growing-carrots>

*Brassica oleracea* var. *botrytis* - <https://iamcountryside.com/growing/growing-cauliflower-from-seed/>

*Apium graveolens* - <https://garden.lovetoknow.com/vegetable-garden/how-grow-celery>

*Castanea* sp - <https://www.theguardian.com/environment/2020/apr/14/horse-chestnut-trees-glory-lost-on-children>

*Allium sativum* - <https://www.countryliving.com/gardening/a19663463/how-to-grow-garlic/>

*Ipomoea batatas*. - <https://www.stuff.co.nz/life-style/homed/garden/71977878/kmara-plant-care-harvest--storage-tips>

Tilia sp. - <https://www.waimeanurseries.co.nz/our-products/fruit-trees/citrus/lime-mexican-key/>  
Citrus limon –  
[https://www.reddit.com/r/gardening/comments/7qlokp/i\\_heard\\_this\\_is\\_where\\_were\\_putting\\_our/](https://www.reddit.com/r/gardening/comments/7qlokp/i_heard_this_is_where_were_putting_our/)  
Lactuca sativa - <https://wikifarmer.com/how-to-grow-lettuce-lettuce-complete-growing-guide-from-seeding-to-harvesting/>  
Allium cepa. - <https://www.garden.eco/how-long-do-onions-take-to-grow>  
Citrus sinensis - <https://www.pinterest.nz/pin/400679698099381137/>  
Pyrus sp. - <https://harvesttotable.com/how-to-grow-pears/>  
Capsicum annuum - [https://www.localflourish.com/growing\\_guides/11-growing-capsicum-in-victoria](https://www.localflourish.com/growing_guides/11-growing-capsicum-in-victoria)  
Prunus sp - <https://www.garden.eco/how-to-grow-a-plum-tree>  
Beta vulgaris subsp. Vilgaris - <https://www.nature-and-garden.com/gardening/chard.html>  
Spinacia oleracea - <https://gardenerspath.com/plants/vegetables/grow-spinach/>  
Allium fistulosum. - <https://www.thompson-morgan.com/how-to-grow-spring-onions>  
Juglans sp. - <https://www.dw.com/en/walnuts-allowed-to-fall-off-tree-german-court-rules/a-42329320>

### Materials Strategy:

Exposed Aggregate - <https://www.pinterest.com.au/pin/466192998929687152/>  
Concrete - <https://www.alamy.com/stock-photo/exposed-aggregate-concrete.html>  
Stone Paving - <https://www.pinterest.nz/pin/304063412324452326/>  
Greystone Chip - <https://stonelockpaving.co.nz/natural-paving/stones-gravel/>  
Awatoto Stone - <https://www.completelandscapes.co.nz/pebbles-stones>  
Tonka Timber - <https://bbstimbers.co.nz/hardwoods/tonka/>  
Colorsteel - <https://www.pinterest.nz/pin/400679698083541193/>  
Yellow Cedar - <https://www.pinterest.nz/pin/312789136614572679/>  
Container - <https://www.dreamstime.com/grey-shipping-container-background-texture-close-up-image143285624>  
Concrete U10 - <https://www.pinterest.nz/pin/456341374743675831/>  
Rata - <https://www.timberarts.co.nz/shop/content/13-the-timber-arts-forest>  
Timber Pallets - <https://www.shutterstock.com/search/pallet+wood+texture>  
Corten Steel - <https://www.istockphoto.com/photo/detail-facade-of-rusted-corten-steel-with-different-patterns-textures-and-structures-gm1129663784-298498609>