



O TEMATATA REVIVAL

REGIONAL PLAN

BACKGROUND INFORMATION

Otematata is a small township located in the South Island of New Zealand inland from Oamaru within the Waitaki district. The township was constructed for the purpose of hydro construction of the Benmore and Aviemore dams, peaking in the 1960s with over 4000 permanent residence which has now severely diminished to just 186. The Otematata township is a township that is declining rapidly in holiday residence however has a large following of summer tourists with over 5000 campers and holiday homeowners in summer months.

ISSUES/ RATIONALE: With a declining population that consists of an elder generation, Otematata requires forward-thinking innovations to not only accommodate for increasing tourism numbers but to entice that of permanent residence back into the township itself. A balance is required within the township to rejuvenate wildlife habitat in company with tourist attractions to support and create an opportunity for specific jobs and existing local businesses. By achieving this it will create a resilient local economy from tourism benefits and local resources that will in turn supply a sustainable township for permanent living.

VISION: Otematata will be a hotspot of opportunity where residence, visitors and recreational activity will work in harmony. The distinctive natural character, Maori culture and hydropower history will be widespread throughout the township to emphasise qualities that cannot be found elsewhere. These qualities will be complemented as Otematata will be an exemplary location for sustainable environmental practices that rejuvenate surrounding mahinga kai.

DESIGN AIM: The project is to entice younger permanent residents back into the Otematata township by accommodating growing domestic tourism drawn to the township's natural beauty and history.

THEORY: The theory applied within the design refers to James Corners theory of place through species recognised in the 'Thick and Thin of it'. Species focuses on a place with its distinctiveness and uniqueness enhanced through steady stages of development. Otematata has an enriched hydro and Maori history as well as unique natural beauty. This design is set to enhance these attributes with stages of development that strengthen important values unique to Otematata.

SUB GOALS AND OBJECTIVES:

- To turn Otematata into a township with multiple jobs and living opportunities, enticing younger families back into permanent residency.
- To create an area of high, medium, and low-density housing types to cater for residential growth in the coming 20-year period.
- To create additional job opportunities within the Otematata township.
- To create additional business opportunities that react to both residents and visitor needs.
- To recognise man-made and natural history within Otematata against growing tourism and residential development.
- To create built developments that are kept within design regulations that are consistent with the surrounding natural landscape and character of Otematata.
- To create educational experiences recognising hydropower and Maori history within the Otematata township.
- To introduce greenery along road networks that lie within the townships developed areas.
- To turn Otematata into a township that connects built infrastructure and public amenities to recreational activities that lie within Otematata.
- To introduce a pedestrian network that connects recreational spaces and local amenities.
- To create greater spatial definition within the township to establish stronger direction between built and recreational facilities.
- To entice the Alps to Ocean cyclists into the Otematata township with multiple recreational activities and unique experiences.

HISTORIC TIMELINE

1800s MAORI SETTLEMENT
Maori name Otematata derived from meaning of 'place of good flint'. Otematata was used as a stepping stone along the Waitaki river as a key exploration route in search of mahinga kai and would later return to homesteads using Mokihis made from native Raupe found in the area.

1850s FARMING SETTLERS
Purchased by the Cameron family spanning over 9000 ha from river valley to the top of the Hawkdon. Later to become central base for the Crown Pastoral Lease spanning over 40000 ha over the Waitaki District.

1860s RESIDENTIAL DEVELOPMENT
Otematata township built as a temporary residential village for workers on the construction of Benmore and Aviemore dams. The township was heavily resourced with many modern facilities and job opportunities.

1960s HYDRO CONSTRUCTION
Benmore dam produces first power in 1965 after construction begun in 1958. Aviemore dam begins in 1962 and completed in 1968, during this time population peaks at 4166 in 1964.

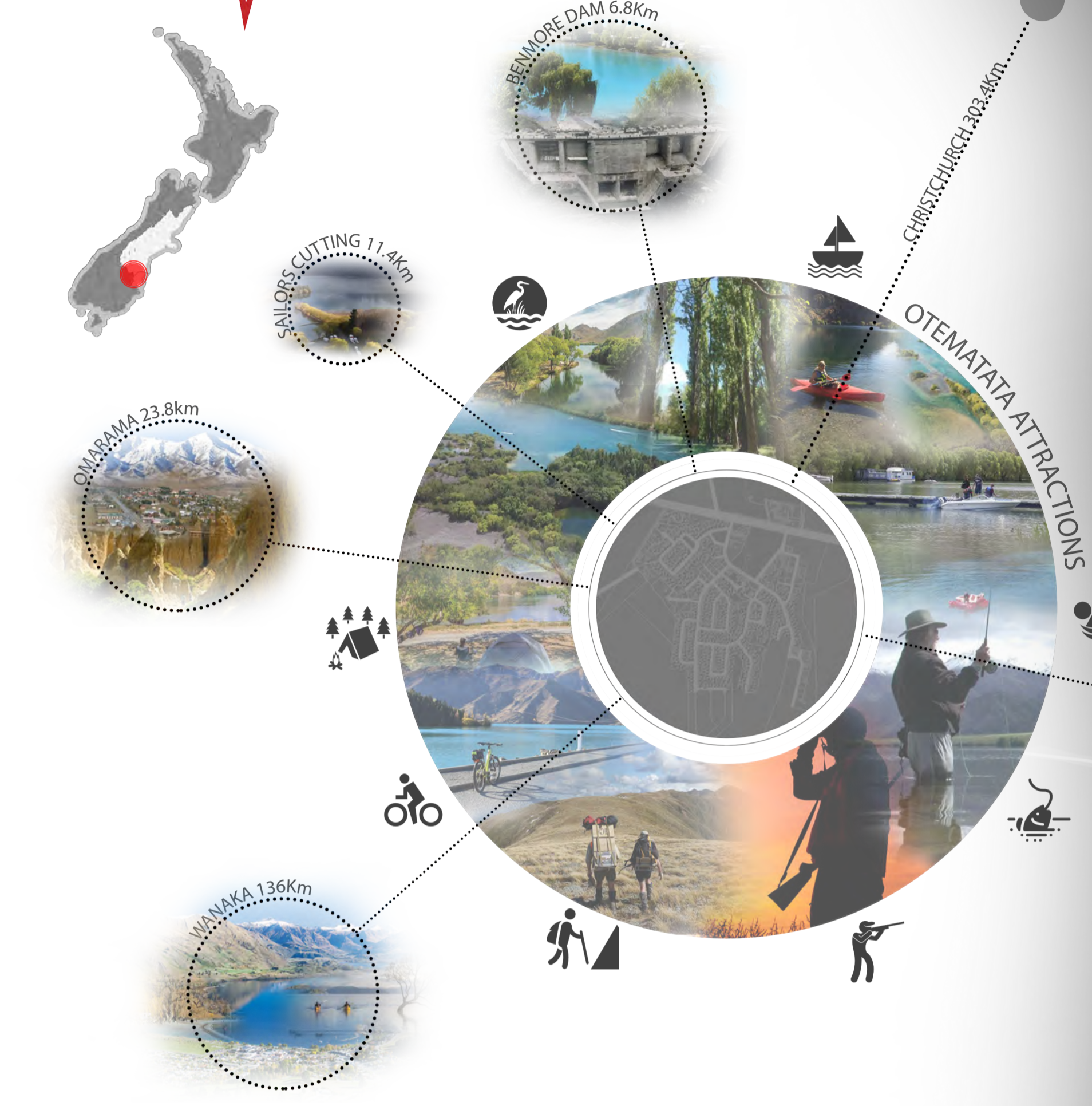
1960s HOUSING MARKET
After the Benmore and Aviemore dams were completed the Otematata population begins its heavy decline in permanent residents falling from 4166 in 1964 to just 2400 in 1968.

1970-1990 RISE OF HOLIDAY HOMES
By 1981 the Otematata township hits a low of just 414 permanent residents with the majority of homes being owned by holiday goers as hydro lakes begin to be used for recreation.

1964-2003 ACCOMMODATION AND SCHOOL
Due to declining permanent residents and an ageing population, single man huts located to the North and South of the township where workers once lived were demolished along with the local school.

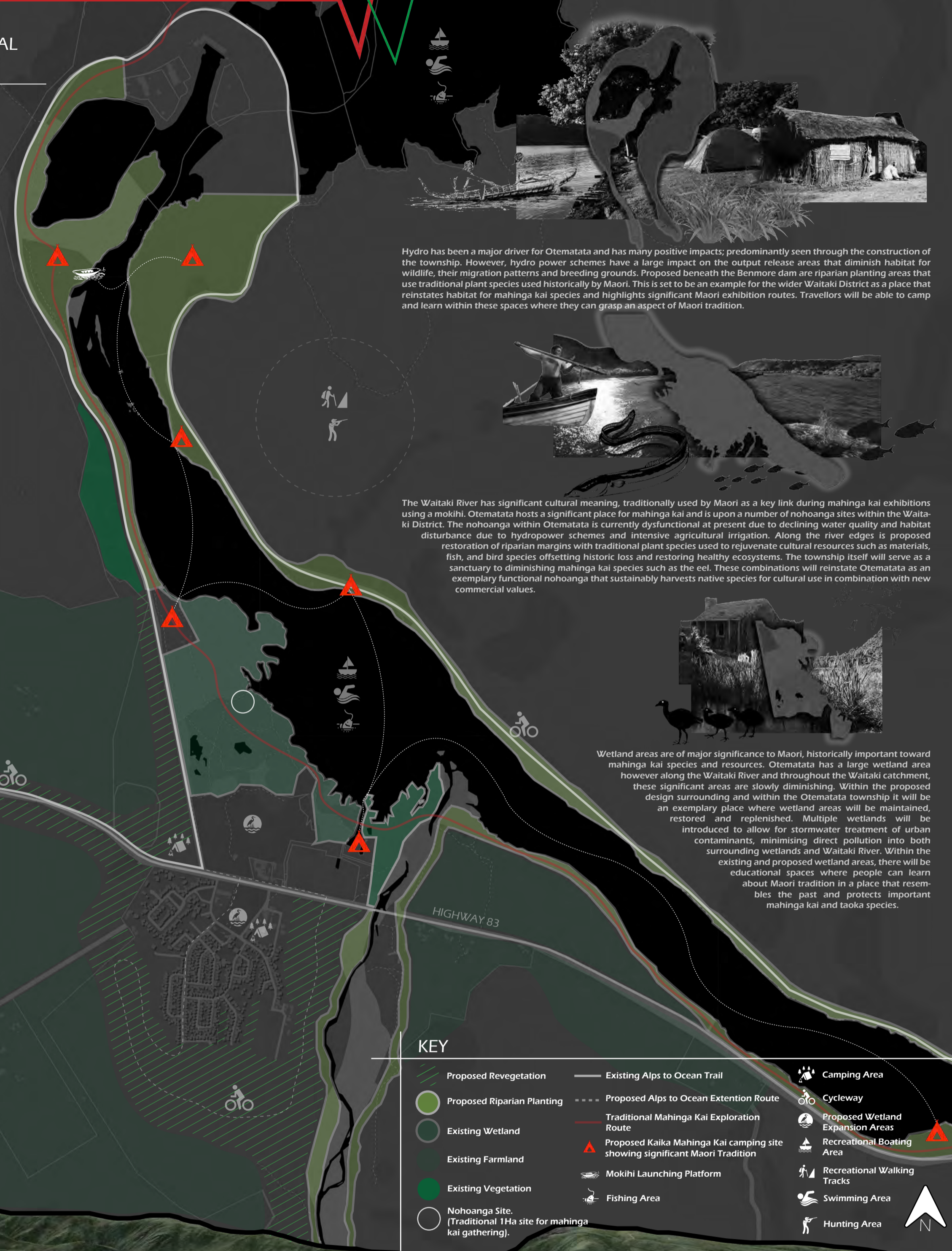
2010 ALPS TO OCEAN CYCLE TRACK
In 2010 the government approved funding toward the Alps to Ocean cycle track which spans from Mt Cook to Oamaru through small Waitaki townships. The Alps to Ocean has brought large amounts of tourism to the Waitaki in which Otematata sits central to.

O TEMATATA TODAY
Otematata today is seen to be a summer destination with over 5000 visitors during summer. The township offers a large amount of recreational activities, however, is continuing to diminish in terms of permanent residents.



DESIGN PROPOSAL
Scale 1:15000

50 YEARS
Residential and Tourism Growth

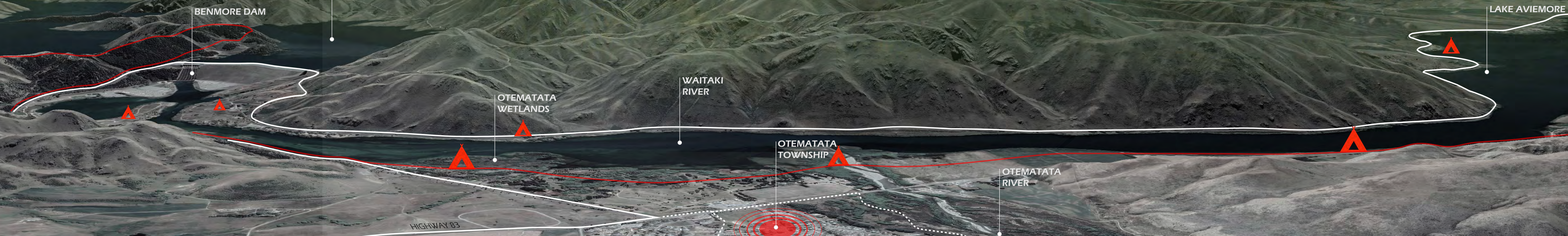


Hydro has been a major driver for Otematata and has many positive impacts; predominantly seen through the construction of the township. However, hydro power schemes have a large impact on the output release areas that diminish habitat for wildlife, their migration patterns and breeding grounds. Proposed beneath the Benmore dam are riparian planting areas that use traditional plant species used historically by Maori. This is set to be an example for the wider Waitaki District as a place that reinstates habitat for mahinga kai species and highlights significant Maori exhibition routes. Travellers will be able to camp and learn within these spaces where they can grasp an aspect of Maori tradition.

The Waitaki River has significant cultural meaning, traditionally used by Maori as a key link during mahinga kai exhibitions using a mokihis. Otematata hosts a significant place for mahinga kai and is upon a number of nohoanga sites within the Waitaki District. The nohoanga within Otematata is currently dysfunctional at present due to declining water quality and habitat disturbance due to hydropower schemes and intensive agricultural irrigation. Along the river edges is proposed restoration of riparian margins with traditional plant species used to rejuvenate cultural resources such as materials, fish, and bird species offsetting historic loss and restoring healthy ecosystems. The township itself will serve as a sanctuary to diminishing mahinga kai species such as the eel. These combinations will reinstate Otematata as an exemplary functional nohoanga that sustainably harvests native species for cultural use in combination with new commercial values.

Wetland areas are of major significance to Maori, historically important toward mahinga kai species and resources. Otematata has a large wetland area however along the Waitaki River and throughout the Waitaki catchment, these significant areas are slowly diminishing. Within the proposed design surrounding and within the Otematata township it will be an exemplary place where wetland areas will be maintained, restored and replanted. Multiple wetlands will be introduced to allow for stormwater treatment of urban contaminants, minimising direct pollution into both surrounding wetlands and Waitaki River. Within the existing and proposed wetland areas, there will be educational spaces where people can learn about Maori tradition in a place that resembles the past and protects important mahinga kai and taika species.

CONTEXT MAP





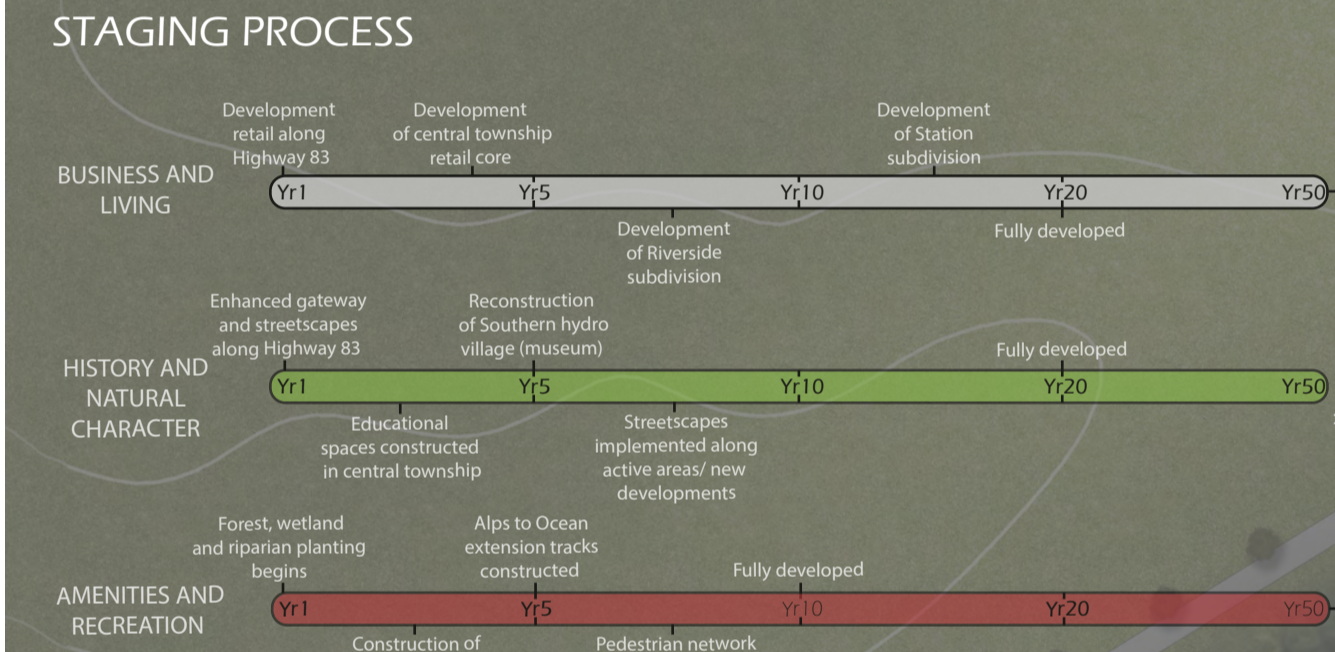
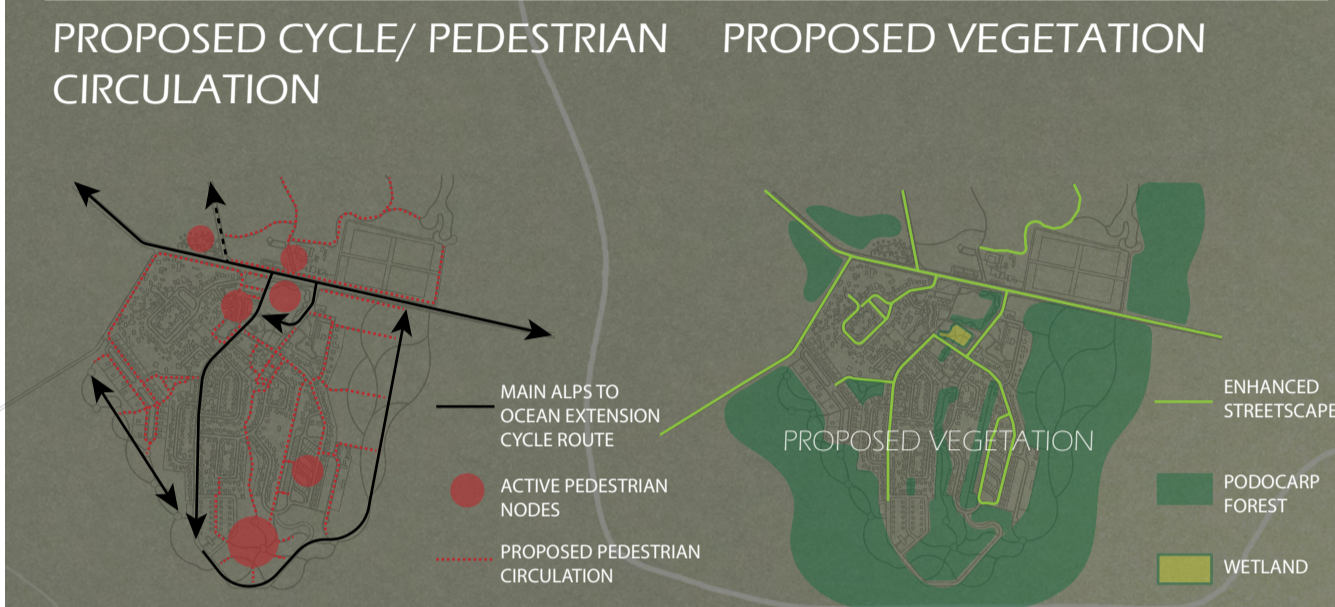
O TEMATATA REVIVAL

MASTER PLAN 1:3000 @A1

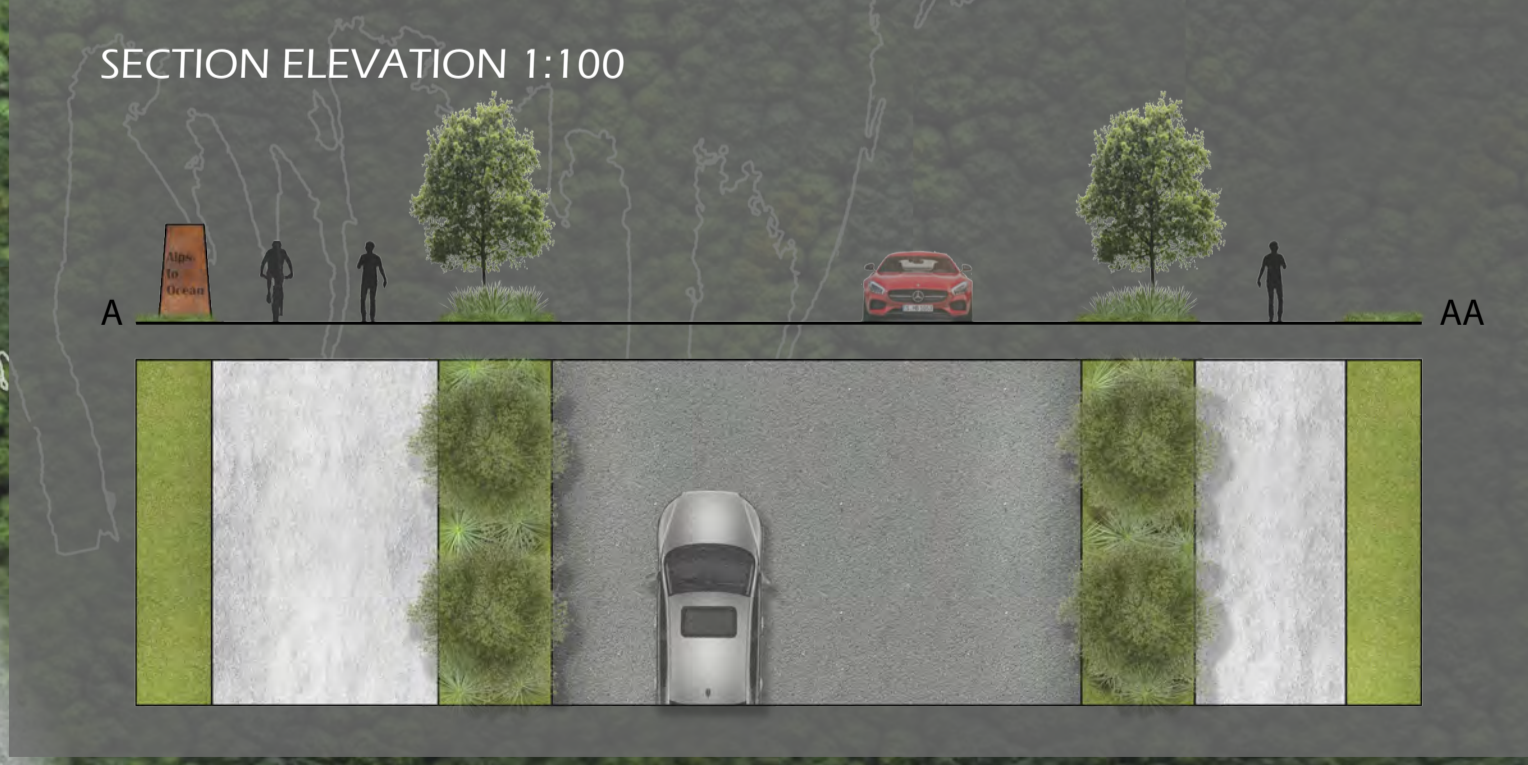
DESIGN RATIONALE

The Otematata township has a large amount of underutilised and undefined space. Within the masterplan, the intent is to make use of large amounts of green space as well as creating strong connections between proposed historic sites and recreational activity. By seamlessly utilising green space at the forefront of the township it will draw people into the pedestrian core where people can find core components of what lies within and around the township. This is intended to drive people to explore further and gain knowledge of hydro and Maori history through various recreational activities.

The masterplan intends to also highlight new areas of development where residential capacity can grow, offering a variety in living typologies from small to large sections catering to varying family size and growth within the township.



- ### DESIGN INTENT
- An artificial pond has been incorporated within the township core. This pond is set as a sanctuary for mahinga kai species providing idealised habitat and breeding ground before release into the Waitaki River once mature. This space incorporates species such as the long and short-finned eel that are currently diminishing within the district, acting as an exemplary component for sustainability and regeneration of wildlife.
 - Outdoor educational spaces for tourists and rural school trips provides a place where historic tours will emphasise the townships rich history within the heart of the township.
 - Enhanced gateway into the township with a variety of plantings, clearly identifying arrival and exit points as well as modulating high speeds along Highway 83.
 - Affordable hydro hut accommodation where cyclists, tourist and schools can stay. This accommodation is reconstructed huts that resemble what hydro construction workers once lived within, offering a unique overnight experience.
 - An enhanced central pedestrian node that incorporates all aspects found around the township as a starting place for where people can branch out and explore. This central node offers a space where people can congregate and easily distinguish where activities lie as well as exposing local businesses to high amounts of foot traffic.
 - Enhanced adventure playground that is strongly connected to central township core as well as neighbouring skatepark, and sports field enhancing walkability between spaces.
 - A wetland stormwater retention pond has been included to store and cleanse polluted urban runoff. This wetland is set to cleanse polluted water that would currently be disposed into the Waitaki River, increasing water quality and protection of mahinga kai species.
 - A DOC center is proposed to offer a central point to the Waitaki catchment. Here, local and commercial fishing regulations can be monitored, along with being at the forefront of the Otematata proposed sanctuary for wildlife. A central DOC location is important within Otematata to ensure that surrounding revegetation strategies are successful, resources are managed, regulations are enforced and also new job opportunities are created.
 - Enhanced existing campground adding to variety in accommodation from unpowered to powered campsites.
 - Enhanced boat ramp with additional parking making water activities easily accessible.
 - The proposed cropland will be an area that makes use of vacant space. This produce can be sold within the township core through additional retail space and farmers markets as well as to surrounding small rural townships. This addition is set to increase the resilience of the local economy as well as providing potential job opportunities.
 - Around the sports field edge is a proposed cycle obstacle course where people of all ages can play within an area that reflects surrounding cycle tracks without having to venture far.
 - The proposed Riverside subdivision is set to offer a range of living typologies from cheaper lots of 200m² and 300m² to more expensive 600m² lots. There is an emphasis on green space to enhance the quality of living with more space to play.
 - The reassembled hydro village around roading that remains post demolition in 2004 will have huts staged as though workers still lived within them for an outdoor museum.
 - Cycle tracks surrounding the township are set to entice the Alps to Ocean cyclists into the township on an extension route as the present Alps to Ocean track turns before the township itself.
 - The Station subdivision is proposed to hold lots ranging from 1000m² to 2500m², offering a variety of living opportunities of low-density open space.



KEY:

- Existing building
- Proposed building
- Historic sculpture





OTEMATATA REVI AL

INTERMEDIATE PLAN 1:500 @A1

DESIGN RATIONALE

Otematata is currently widespread with large amounts of open green space and little spatial definition. Otematata needs a heart that incorporates the townships unique qualities and acts as a starting point for further exploration of the many activities, historic sites and environmental opportunities Otematata offers.

The pedestrian core is set to incorporate key assets that surround Otematata along with posing an exemplary framework for environmental improvement. The space has been developed to create a heart within township where people can congregate, socialise and support local businesses as well as experience the natural beauty and unique materials that surround Otematata.

DESIGN INTENT

1 The artificial pond is set to be a place where wildlife found in the Waitaki river can flourish. With hydro dams effecting the natural breeding and migration patterns through habitat loss, this artificial sanctuary will pose as an exemplary idealised habitat for mahinga kai species. People will be able to interact and feed the wildlife within the pond enabling tangible learning toward the importance of mahinga kai species. Once species such as the eel reach an appropriate age to be released into the Waitaki River they will do so making room for the next cycle. This process over time is set to increase mahinga kai species within the Waitaki catchment that was once present, enabling local and commercial fishing operations to remain sustainable.

2 The proposed stormwater catchment wetland is set to tackle another issue within the Waitaki River. With nutrient runoff from intensified farming and polluted stormwater from surrounding townships the Waitaki Rivers water quality is reduced along with corresponding wildlife habitat. The proposed stormwater catchment is to work in combination with riparian margins (see page 1 Regional Plan) to minimise pollutants into the Waitaki River. By minimising pollutants, it will allow for wildlife habitat restoration enabling released and present mahinga kai species to flourish.

3 This space enables people to rest along the Alps to Ocean cycle extension route. This space offers cycle storage, e-bike charging, cycle rental and tour bookings to people that wish to explore the townships multiple activities. During winter months the rental shop will offer ski and snowboard hire for the Awakino ski area along with other tours such as the Otematata Station, wetlands and proposed historic outdoor museum.

4 This space will offer the opportunity for surrounding farmers to engage with the local community by selling their produce at weekly farmers markets. People within the community will also be able to sell any of their produce. The market space is made up of a mixture of non-permeable and permeable ground to offer maximum versatility during seasonal change. An area of green allows for people to sit, eat and socialise during summer months whilst the paved area allows all year round access and usage from both foot and vehicle. This space is set to entice transit travellers passing through by being visible from Highway 83 along with incorporating the entire community in a weekly activity.

5 The proposed central pedestrian core is set to create a hive of activity. Proposed retail has been incorporated into the centre to give local businesses high amounts of foot traffic along dual-sided active frontages. This space incorporates a wide range of site-specific plantings that reflect the township natural beauty along with multiple water features representing the townships strong connection to water. This space will be a place where activity and play will flourish along with having a strong connection towards Otematata's important assets in one central location.

6 The adventure playground offers an experience that incorporates the combination of Maori and hydropower history. The strong connection to water is highlighted with a splash pool featuring mohiki rafts and climbable feature eels representing past Maori mahinga kai gathering traditions. Within the centre is an interactive hydro turbine that children can circulate, creating water waves mimicking intense hydro water distribution. These play components are complemented by a feature slide made predominantly of concrete resembling the hydropower outputs.

DESIGN INCORPORATION



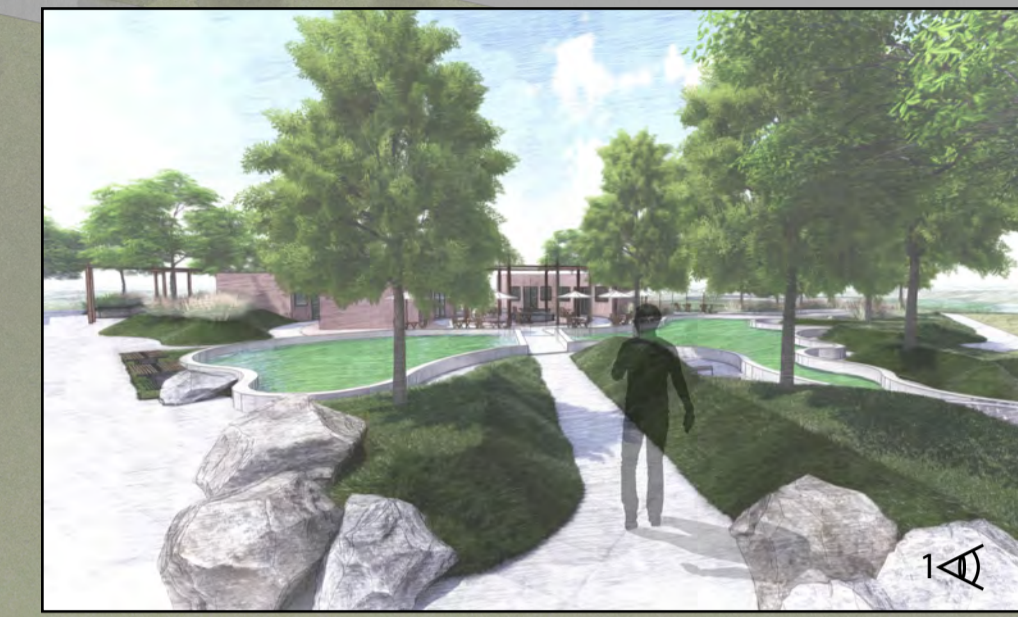
SECTION ELEVATION 1:100



1 ARTIFICIAL WILDLIFE SANCTUARY POND
Surface Level +1.30
Ground Level +3.30

2 STORMWATER CATCHMENT WETLAND
Surface Level +1.30
Ground Level +2.30

PEDESTRIAN CORE PERSPECTIVES
ARRIVAL INTO SPACE



CENTRAL RETAIL AND DINING AREA



ALPS TO OCEAN CYCLE REST AND RETAIL AREA



EAST FACING DINING AREA OCCOMPANIED WITH GREENSPACE AND ADVENTURE PLAYGROUND





O TEMATATA REVI VAL

PLANTING STRATEGY

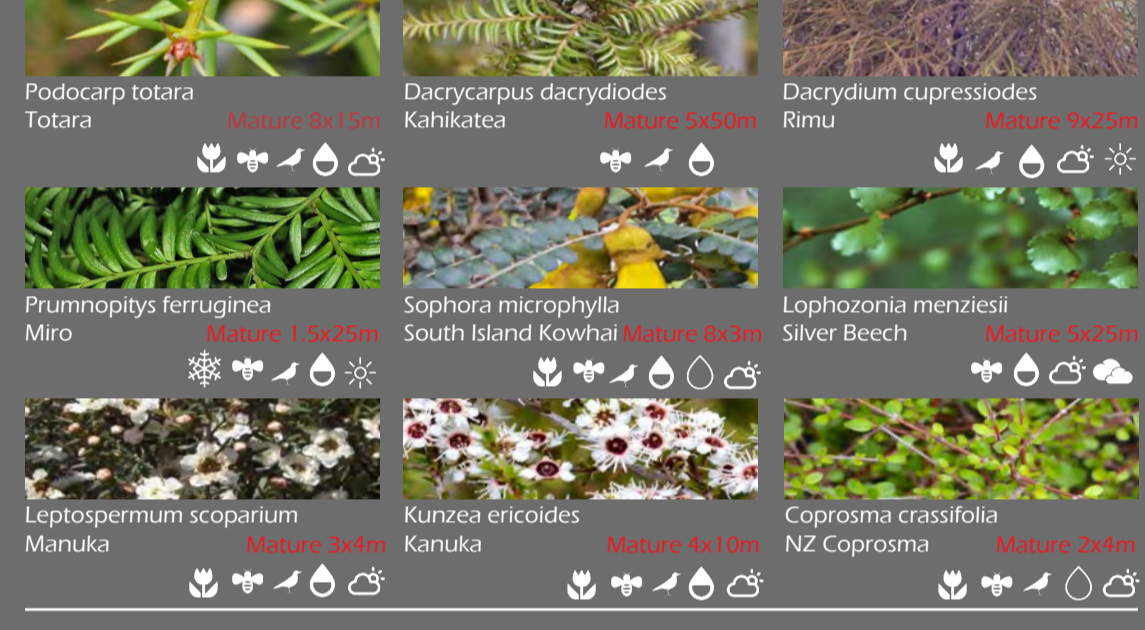
DESIGN RATIONALE
 Otematata is a place with high amounts of underutilised green space, declining river edge habitat and the need for wetland enhancement. The plant selections are aimed to create cohesiveness toward Otematata's surrounding landscape, protrude developed residential zones and replenish native species within the area.

There is a need for cultural recognition toward Maori tradition by providing habitat for mahinga kai species and natural resources. There is also the need to further define Otematata as an exemplary place for reclamation of highly cultivated land back to regenerative podocarp forest.

Visual amenity is another key aspect to incorporate into the township, creating spaces that welcome visitors into areas that enhances the surrounding landscapes natural beauty, colour palette and materials.

- PLANTING PALETTE KEY**
- ☀ Full Sun
 - ☁ Part Shade
 - ☂ Full Shade
 - 💧 Well Drained Soil
 - 💧 Moist Soil
 - 💧 Water/ Wet Soil
 - 🐦 Attracts Birds
 - 🐝 Attracts Bees
 - 🌸 Flowers/ Fruits

REGENERATIVE PODOCARP FOREST



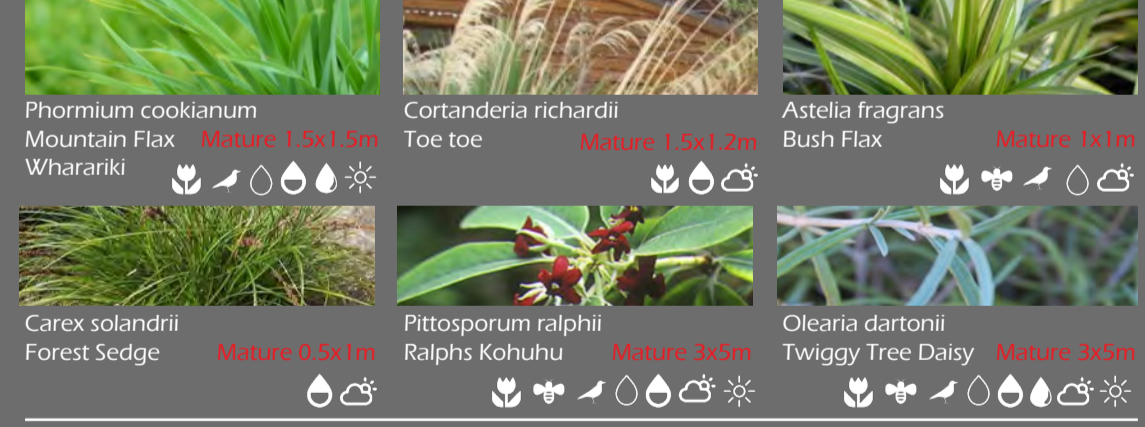
WETLAND SPECIES



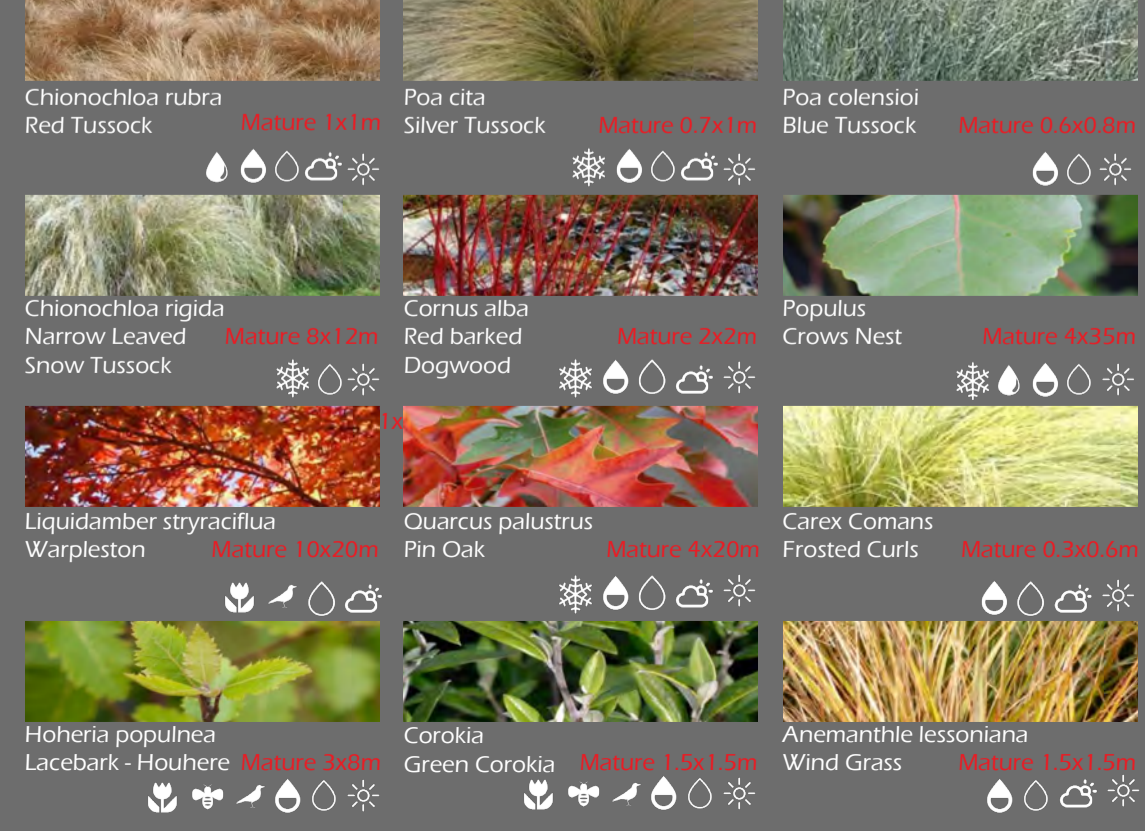
SPECIES USED IN COMBINATION



RIPARIAN SPECIES



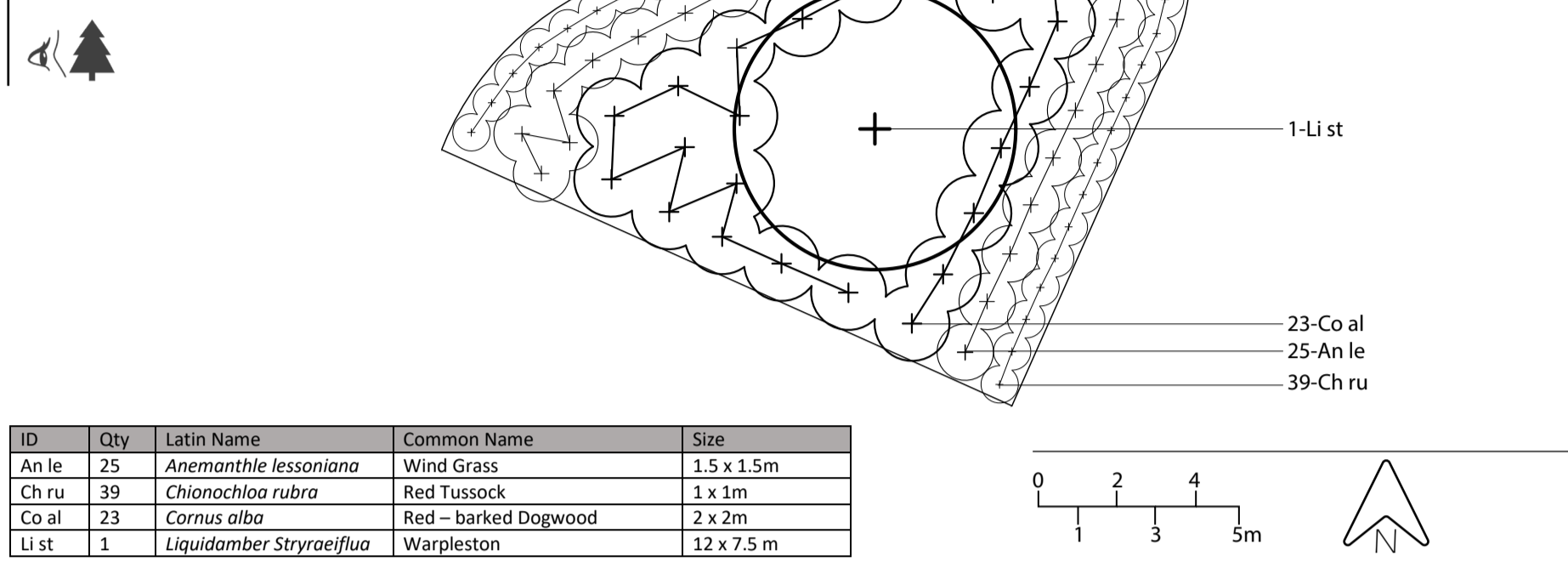
STREETSCAPE/ VISUAL AMENITY SPECIES



EXEMPLAR VISUAL AMENITY GARDEN BED



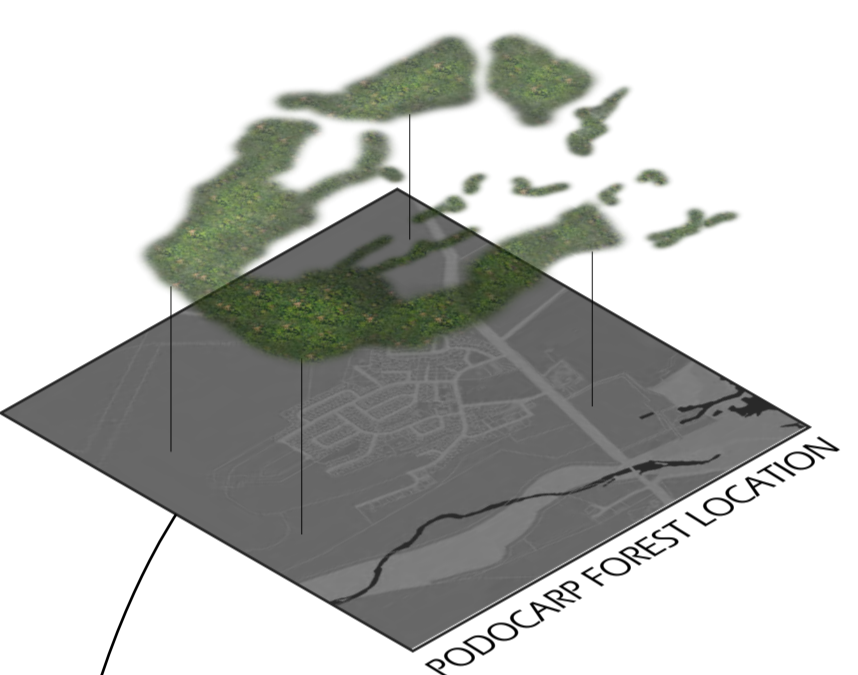
PLANTING PLAN 1:200



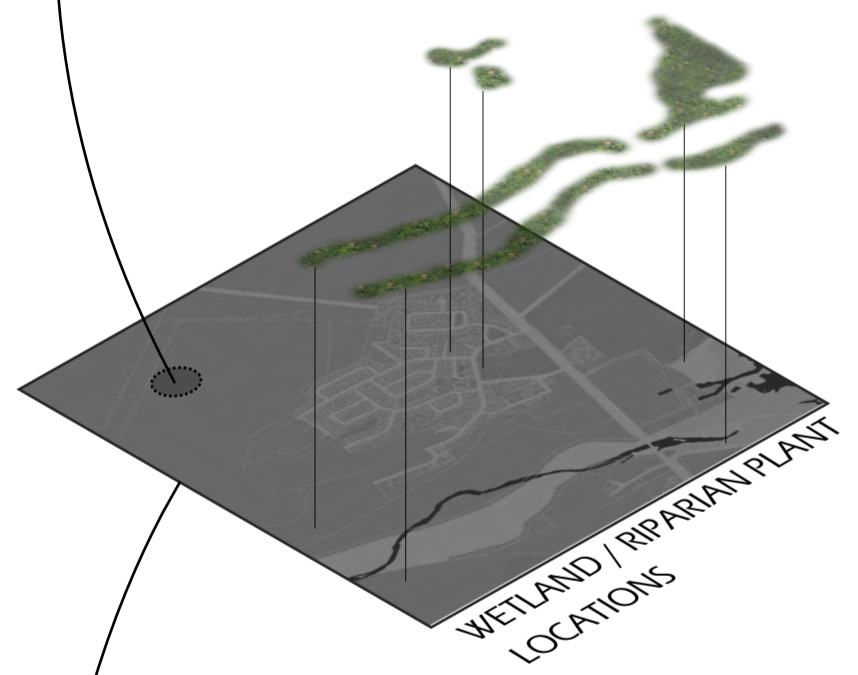
PERSPECTIVE



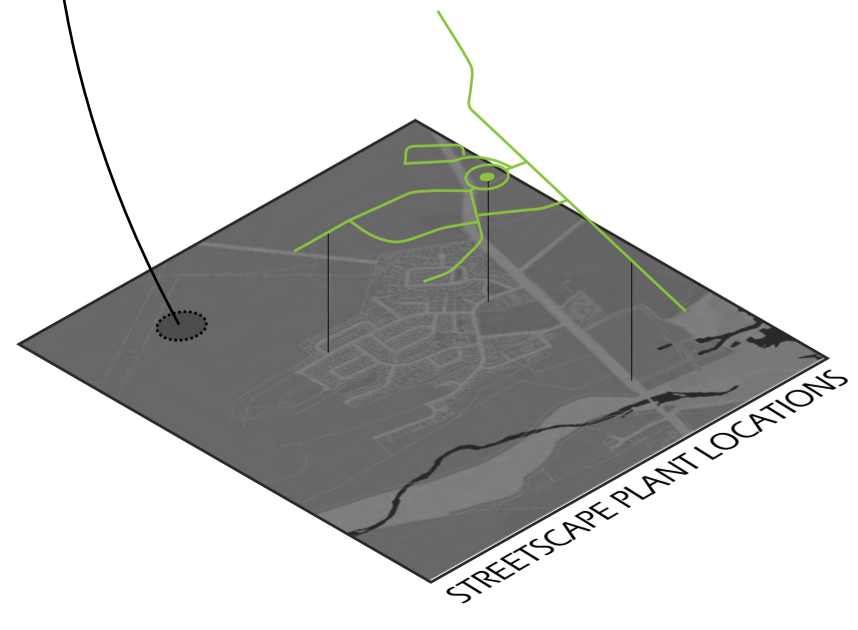
Otematata is surrounded by intensive agricultural land under current pastoral lease. With large amounts of land diminished to agriculture, reintroducing podocarp forest will act as an exemplary landscape of how agriculture and wildlife habitat can work in harmony. Regenerative podocarp forest will contain a wide variety of diverse plant species from ground cover to the emergent layer, creating an abundance of habitat for wildlife. The forest areas will be widespread around the Otematata township for people to venture within and also protrude the township core to amplify the surrounding natural beauty within a developed urban setting.



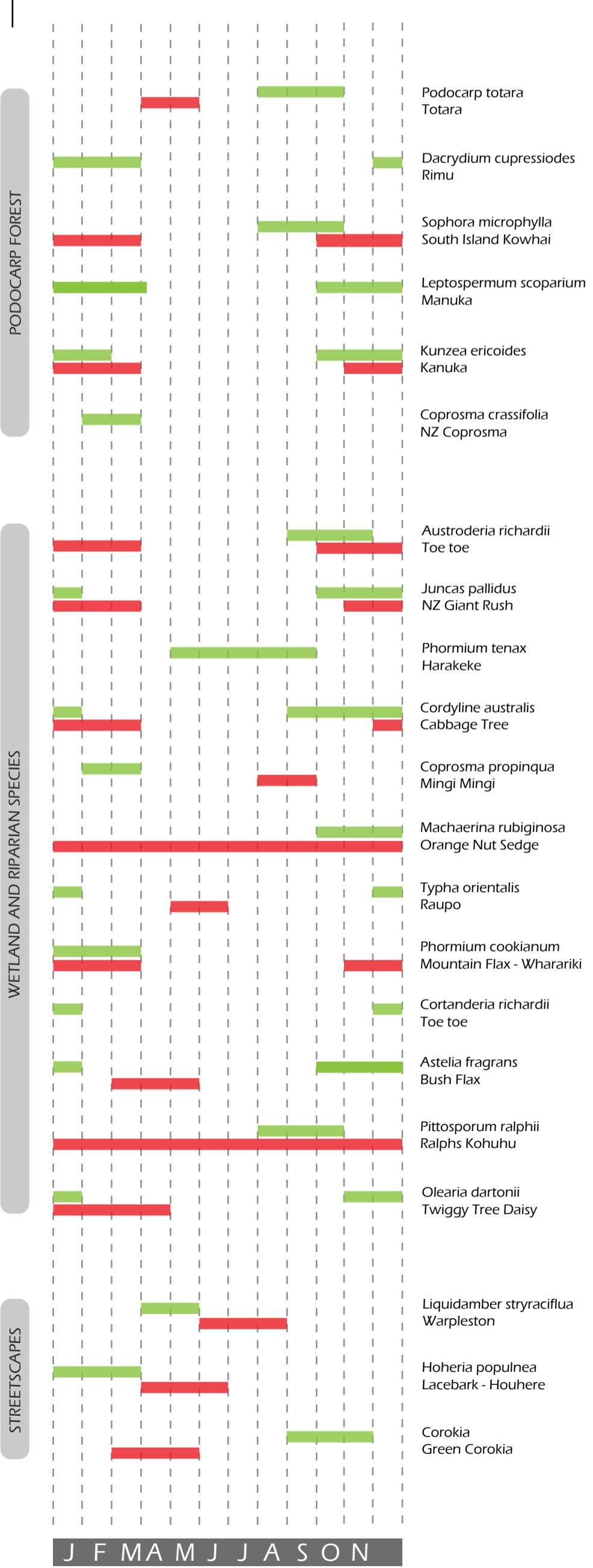
Otematata has enriched Maori history. Traditionally used as stopping place along the Waitaki River during mahinga kai gathering exhibitions. As history has evolved with hydropower development, this strong traditional connection to water has diminished. Restricted water flows and pollution from hydro stations and residential development has resulted in a non-functional nohoanga area and loss of important wildlife habitat. A combination of intensified wetland development and riparian river margins will result in minimal pollution entering the Waitaki River and act as an exemplary place for sustaining mahinga kai species. With a strong emphasis to incorporate harakeke and raupo plantings as well as other diverse flaxes, it is set to reinstate a functional nohoanga. A functional nohoanga will allow for Maori to gather traditional resources and also educate others about traditional Maori practices through gathering and construction techniques.



Otematata has a large amount of unutilised green space and wide street margins. An emphasis on streetscapes has been included to enhance natural aesthetic throughout highly active areas such as residential developments and proposed pedestrian core. A selection of plants offers immediate aesthetic appeal such as a variety of fast-growing grasses and tussocks to fill spaces whilst larger species mature to full growth. Along Highway 83 a series of larger species such as the crows nest poplar is set to mitigate speed by identifying clear entry and exit points into the township, along with making use of wide street margins. A series of species such as the cornus alba has been chosen to tie in with surrounding materials such as red brick within the pedestrian core derived from Otematata's permanent village.



PLANT FLOWERING AND FRUITING DURATIONS



KEY:
 — FLOWERING DURATION
 — FRUITING DURATION

INDICATIVE FAUNA SPECIES

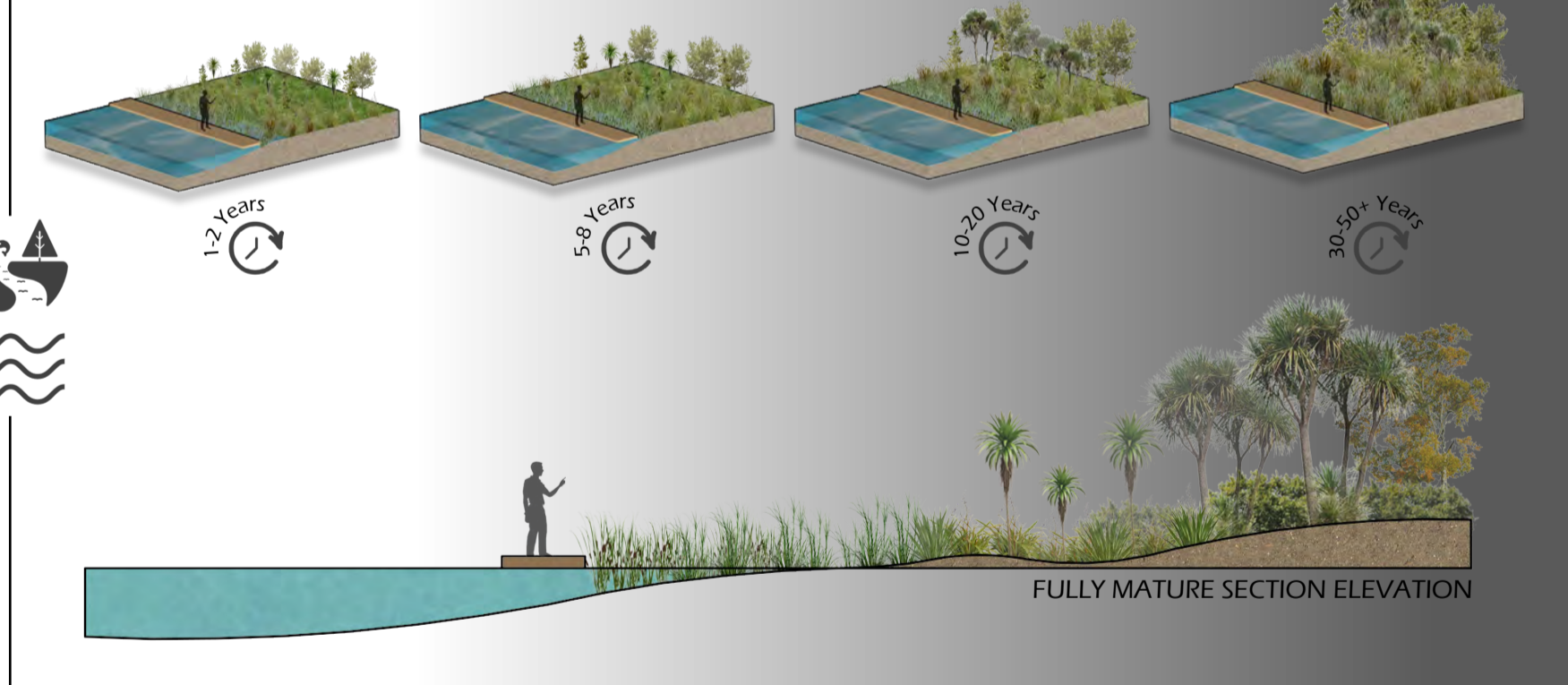
- SWALLOW
- FANTAIL
- BROWN TROUT
- YELLOW EYED MILLET
- SALMON
- LONG FINNED EEL
- SHORT FINNED EEL
- PINEKO
- BLACK SWAN
- MALLARD
- GREATER SCAUP
- GREEN CRESTED GREBE
- TREE FROG
- WHITE FACED HERON

KEY:
 ○ IMPORTANT MAHINGA KAI SPECIES

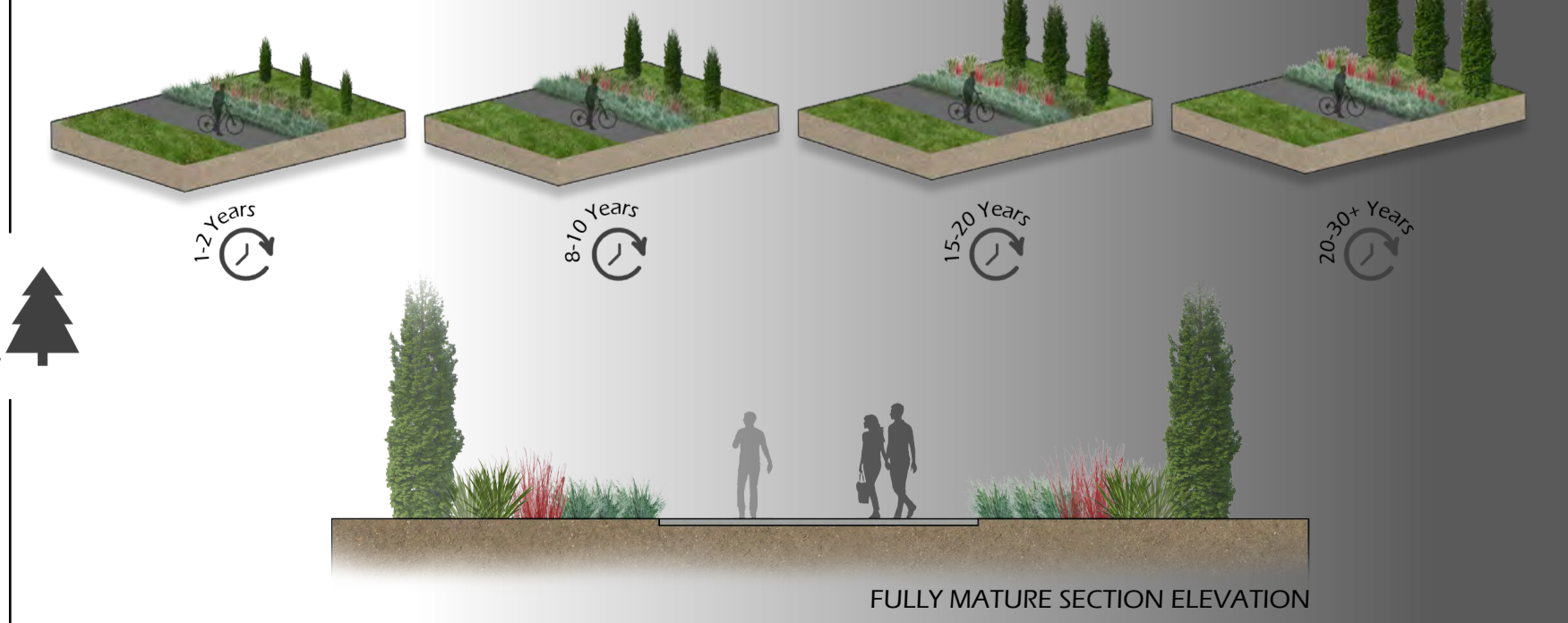
PODOCARP FOREST TRANSFORMATION OVER TIME



RIPARIAN AND WETLANDS TRANSFORMATION OVER TIME



STREETSCAPE TRANSFORMATION OVER TIME



OTEMATATA REVIVAL

MATERIALS STRATEGY

DESIGN RATIONALE
 Around Otematata there is an abundance of materials that make up a distinctive landscape, these also highlight key structures that have contributed towards the development of the township. The materials within the design are selected to both incorporate the surrounding natural beauty of the township as well as highlight remnant materials from the township's initial development.

By incorporating a range of raw and industrial materials this will give the township a consistent balance between manmade and natural forms. Incorporation of raw rock materials is an important feature to incorporate within the township to signify the connection to Otematata's translated name of "Place of good flint".

- MATERIALS USAGE KEY**
- Retail Buildings
 - Path/ Cycleways
 - Shade Structures
 - Steps
 - Garden Beds
 - Amenities
 - Edging
 - Signage



QUARTZOFELDSPATHIC STONE
 Surrounding Otematata there is a diverse landscape made up largely of quartz rock which has been used by Maori for flint throughout history. Quartz rock along with greywacke represent Otematata's translated name of "Place of good flint". Utilisation of such stone within developed areas aids to naturalise spaces and connect to past tradition.



GREYWACKE CHIP
 Greywacke is a prominent material found throughout the surrounding landscape and has rich ties to Maori tradition and history. Greywacke chip offers a permeable surface allowing free draining of any moisture, therefore eliminating the need for curbing or drainage infrastructure throughout proposed cycle and walkways.



EXPOSED AGGREGATE
 Exposed aggregate offers a textured base throughout the proposed pedestrian core against large areas of raw concrete surfaces. With the multiple specs of white, grey, and black stones it complements black jacks conglomerate stone found within the Waitaki river, recognising Otematata's strong connection to water.



HONED DRY BLOCK
 Honed dry block is set to resemble black jack conglomerate stone found within the Waitaki river and complement the use of exposed aggregate paving. With specs of grey, white and black it resembles material found within the Waitaki Rivers braided streams after centuries of eroded sedimentary rocks from surrounding hillsides.



CONCRETE
 Otematata has an enriched hydropower history. Used within the nearby Benmore and Aviemore hydro stations concrete contrasts the surrounding landscape which is set to be replicated within the township, connecting Otematata to its historic past.



RED BRICK
 Red brick is found within Otematata's permanent village. The permanent village was used by high ranked officials during Hydro dam construction. Red brick is set to feature within the pedestrian core tying proposed retail buildings and adjacent paving areas back to hydro history that made Otematata what it is today.



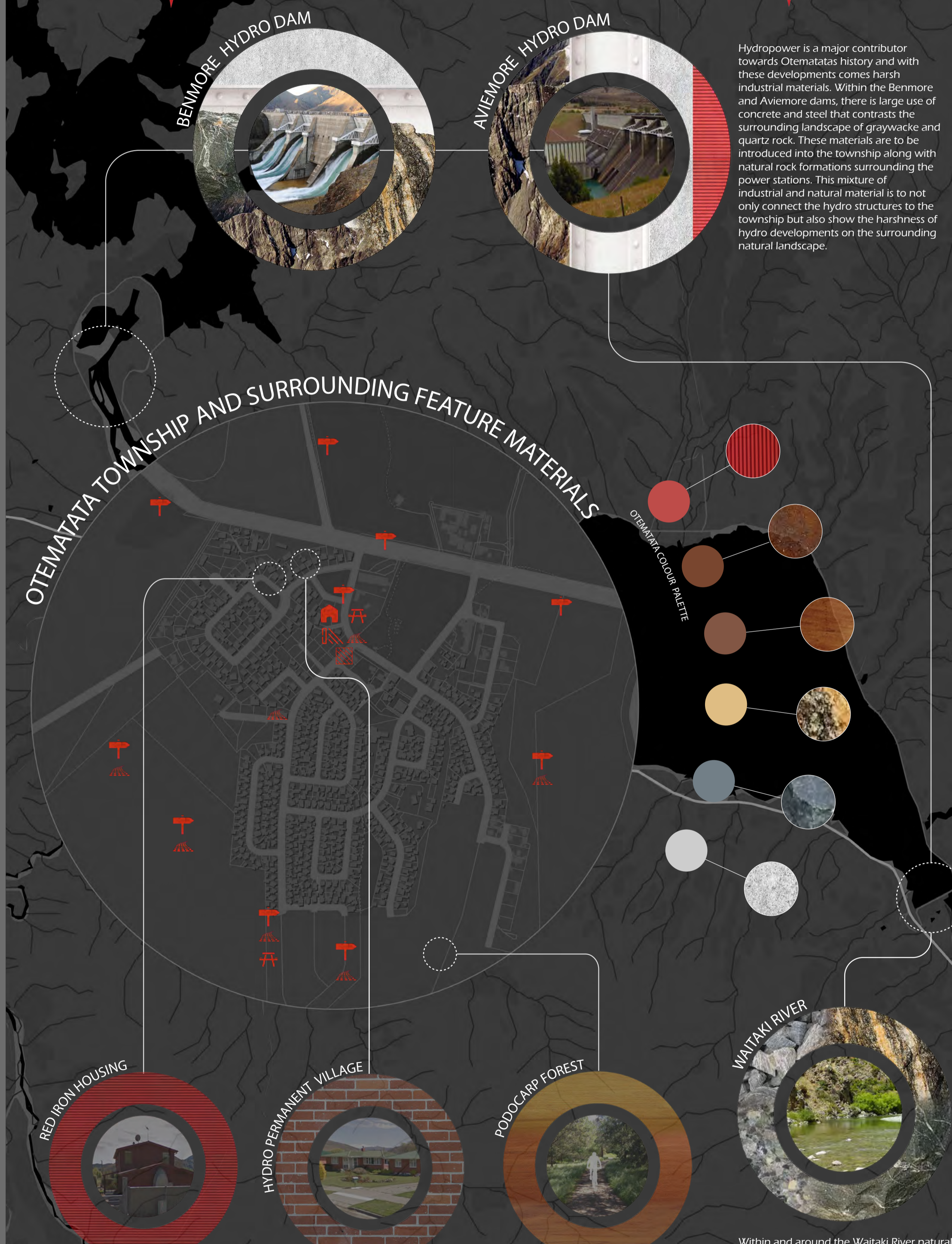
RED COLOURSTEEL CORRUGATED IRON
 Red corrugated iron is a material found throughout the residential zone. As corrugated iron is an inexpensive material, this was used greatly when building houses during hydro construction. Corrugated iron is to be used within the proposed pedestrian core tying into its direct surroundings whilst maintaining a consistent colour pallet of other selected materials.



CORTEN STEEL
 Corten steel will be widespread throughout Otematata in varying signage and interpretation panels. Corten Steel offers a rustic finish that gains more character with age and eliminates the need for regular maintenance. The rough texture and aging rust colour ties in the industrial hydro character and complements the gold within the quartz rock found in both the landscape and proposed pedestrianised spaces.



NATIVE HARDWOOD
 The use of native hardwood is incorporated to naturalise developed spaces, especially the pedestrian core through multiple built structures. The use of native hardwoods will consist of totara, rimu, and kahikatea that intend to form a connection to the proposed podocarp forest surrounding and within the Otematata township.



Throughout the Otematata township, there is an abundance of simplistic materials used within the residential area. The main material that is consistent throughout the township is red corrugated iron. This will be transferred into the pedestrian core adding a pop of colour and tying in the direct surroundings of permanent residential structures.

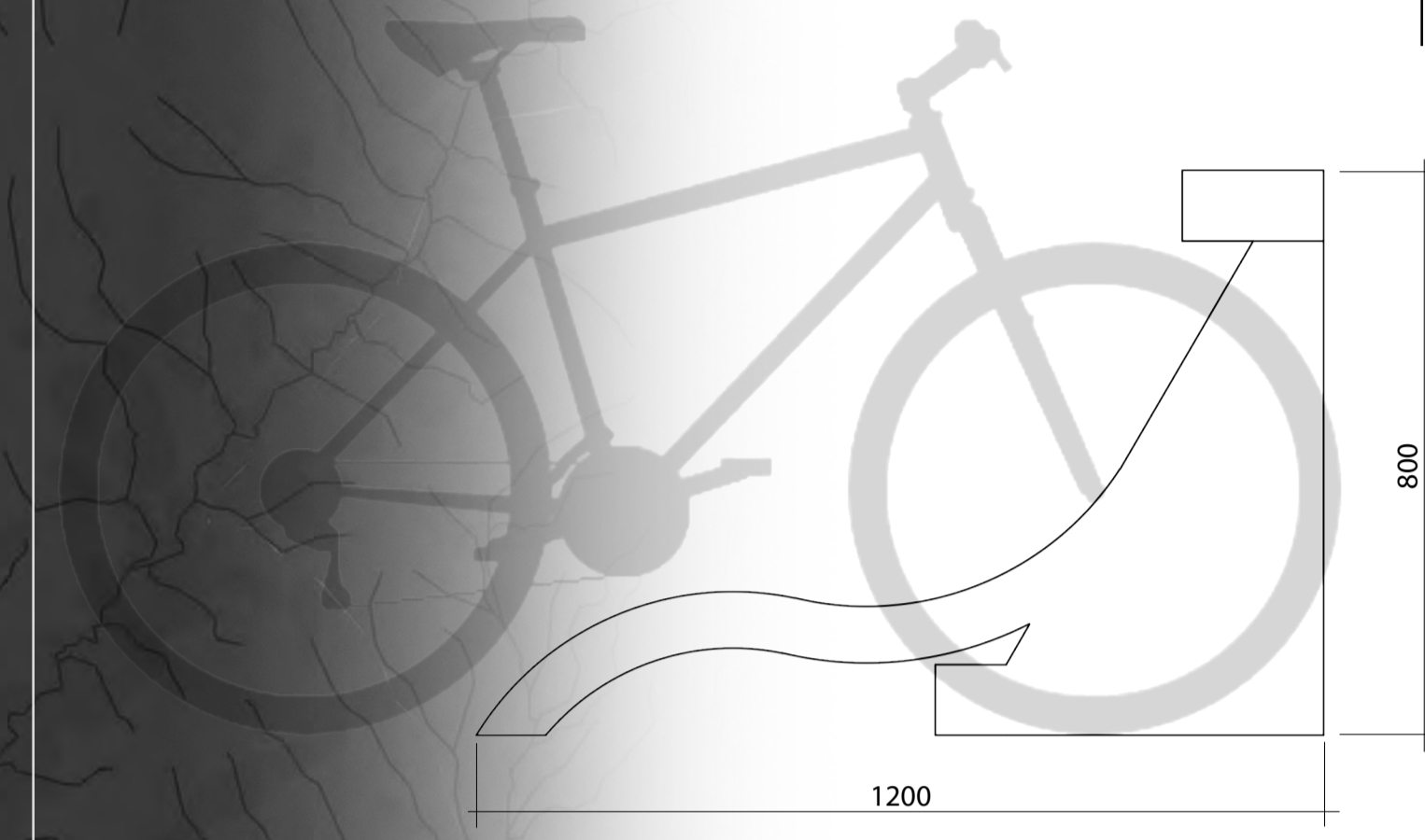
Otematata has an abundance of history from hydro construction; one significant area being the permanent village used for honorary workers during peak construction. Throughout the permanent village, there is a constant theme of red brick that will be transferred into the proposed retail structures, as well as being used for paving within the pedestrian core.

A range of natural hardwoods is intended to be used for shade structures and garden edgings throughout the Otematata township. Regenerative forests will make up a large portion of the vegetation surrounding and within the township. There will be a strong emphasis on recycled and locally sourced hardwoods such as totara, rimu, and kahikatea.

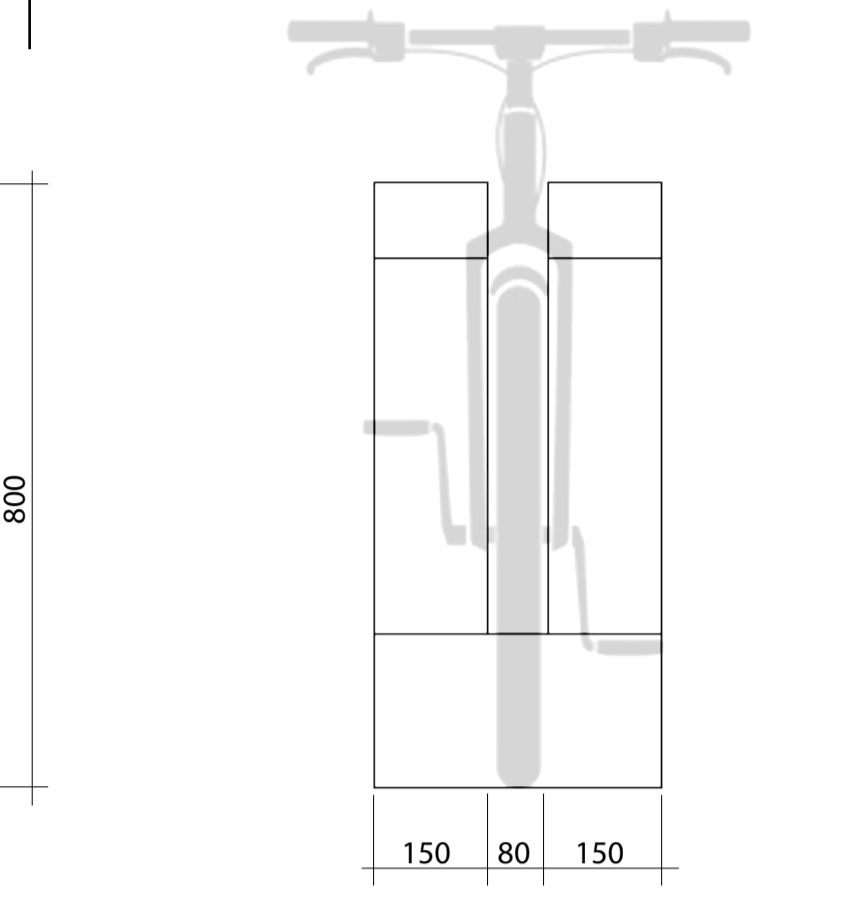
Within and around the Waitaki River natural materials are abundant within the landscape. With a diverse range of rock and gravels on the upper slopes of greywacke and quartz to black jacks conglomerate within the rivers beneath there is a large array of colours textures to capitalise upon. This versatility in rock material will be transferred into and around the Otematata township through varying pathing and stone features, showing not only the importance of the surrounding landscape but the connection to Otematata's translated name of "Place of good flint".

Hydropower is a major contributor towards Otematata's history and with these developments comes harsh industrial materials. Within the Benmore and Aviemore dams, there is large use of concrete and steel that contrasts the surrounding landscape of greywacke and quartz rock. These materials are to be introduced into the township along with natural rock formations surrounding the power stations. This mixture of industrial and natural material is to not only connect the hydro structures to the township but also show the harshness of hydro developments on the surrounding natural landscape.

HYDRO CYCLE STAND SIDE ELEVATION
 01 Scale 1:10



HYDRO CYCLE STAND FRONT ELEVATION
 02 Scale 1:10



TOWNSHIP INSPIRATION AND IMPROVEMENTS



Hydro piece outside the Otematata main road bar and motel.



Otematata bar and hotel using a combination of hardwood and greywacke rocks.



The Otematata "O" is a piece of pipe taken from the Benmore dam. This shape is reflected in hydro inspired seating.



Wetland signage is out of date and in need of revitalising. Corten steel signage will replace this whilst maintaining a rustic aesthetic seamless to the surrounding landscape.



The main entrance signage is outdated therefore will be replaced. New signage will maintain a hydro theme in forms and materials rather than image.



The Otematata Inn uses a large amount of greywacke rock for pathways. This will tie into proposed cycle and walking tracks using greywacke chip.

HYDRO INSPIRED CYCLE STANDS AND SIGNAGE



Bicycle stands and corresponding signage have been inspired by the Benmore and Aviemore hydro dams. The shapes and materials are set to replicate those prominent in hydro structures to create unique yet functional features. The use of both poured concrete and corten steel adds to an industrial aesthetic that contrasts surrounding natural hardwoods and stone.

HYDRO INSPIRED STREET AESTHETIC AND SEATING



Hydro inspired seating allows people to sit facing inward and outward in groups or individually. The names of both Benmore and Aviemore dams are sandblasted into the sides of the outer concrete creating direct relevance to important historic landmarks.

Entry and exit signs to Otematata are inspired by hydro shapes and materials that remain consistent with other proposed features.

The combination of both exposed aggregate and corten steel enhances aesthetic along predominant pathways within the pedestrian core.

ALPS TO OCEAN REST AREA



The Alps to Ocean cycle rest area incorporates both soft and hard materials mixing both native hardwood and concrete to create not only aesthetic appeal but functional forms.

Image Reference List

Regional Plan Images

Otematata Station <https://www.waterfordpress.co.nz/agriculture/otematata-station/>

Otematata Township <https://researcharchive.lincoln.ac.nz/bitstream/handle/10182/6556/Leap-rr-38.pdf?sequence=3>

Benmore Dam <https://www.meridianenergy.co.nz/who-we-are/our-power-stations/hydro/benmore>

Alps to Ocean logo <https://www.odt.co.nz/regions/north-otago/alps-2-ocean-logo-wins-high-praise-designer>

Otematata Today <https://www.otematata.kiwi.nz/boating>

Otematata Housing <https://www.google.com/maps/search/Otematata+boat+club/@-44.6066347,170.1892098,1145m/data=!3m1!1e3>

Permanent Village <https://www.google.com/maps/search/Otematata+boat+club/@-44.6066347,170.1892098,1145m/data=!3m1!1e3>

Demolished Residential land <https://www.google.com/maps/search/Otematata+boat+club/@-44.6066347,170.1892098,1145m/data=!3m1!1e3>

Planting Strategy Images

Blue Tussock <https://www.southernwoods.co.nz/shop/poa-colensoi/>

Bush Flax <https://www.southernwoods.co.nz/shop/astelia-fragrans/>

Cabbage Tree <https://www.southernwoods.co.nz/shop/cordyline-australis/>

Crows Nest Poplar <https://www.southernwoods.co.nz/shop/populus-nigra-x-euramericana/>

Forest Sedge <https://www.southernwoods.co.nz/shop/carex-solandri/>

Frosted Curls <https://www.gardenia.net/plant/carex-comans-frosted-curls-new-zealand-hair-sedge>

Giant rush - Wiwi <https://www.southernwoods.co.nz/shop/juncus-sarophorus/>

Great Bulrush <https://www.southernwoods.co.nz/shop/schoenoplectus-great-bulrush/>

Green Corokia <https://www.southernwoods.co.nz/shop/corokia-geentys-green/>

Harakeke <https://www.southernwoods.co.nz/shop/phormium-tenax/>

Kahikatea <https://www.southernwoods.co.nz/shop/dacrycarpus-dacrydioides/>

Kanuka <https://www.southernwoods.co.nz/shop/kunzea-ericoides/>

Lacebark <https://www.southernwoods.co.nz/shop/populus-nigra-x-euramericana/>

Makura Sedge <https://www.southernwoods.co.nz/shop/carex-secta/>

Manuka <https://www.southernwoods.co.nz/shop/leptospermum-scoparium/>

Mikimiki <https://www.southernwoods.co.nz/shop/coprosma-rubra/>

Mingimingi <https://www.southernwoods.co.nz/shop/coprosma-propinqua/>

Miro <http://www.nzplants.auckland.ac.nz/en/about/-seed-plants-non-flowering/native-conifers/podocarpaceae/prumnopitys-ferruginea.html>

Mountain Flax <https://www.southernwoods.co.nz/shop/phormium-cookianum/>

Narrow Leaved Snow Tussock <https://www.southernwoods.co.nz/shop/chionochloa-rigida/>

NZ Coprosma <https://www.southernwoods.co.nz/shop/coprosma-crassifolia/>

Orange Nut Sedge <https://www.southernwoods.co.nz/shop/machaerina-orange-nut-sedge/>

Pin Oak <https://www.southernwoods.co.nz/shop/quercus-palustris/>

Ralphs Kohuhu <https://www.southernwoods.co.nz/shop/pittosporum-ralphii/>

Raupo <https://www.kauriparknurseries.co.nz/plants/typha-orientalis/>

Red – barked Dogwood <https://www.southernwoods.co.nz/shop/cornus-alba-sibirica/>

Red Tussock <https://www.southernwoods.co.nz/shop/chionochloa-rubra/>

Rimu <https://www.southernwoods.co.nz/shop/dacrydium-cupressinum/>

Silver Beech <https://www.southernwoods.co.nz/shop/lophozonia-menziesii/>

Silver Tussock <https://www.southernwoods.co.nz/shop/poa-cita/>

South Island Kowhai <https://www.southernwoods.co.nz/shop/sophora-microphylla/>

Swamp Sedge <https://www.southernwoods.co.nz/shop/carex-virgata/>

Toe toe <https://www.southernwoods.co.nz/shop/austroderia-toe-toe/>

Toe toe <https://www.southernwoods.co.nz/shop/chionochloa-flavicans/>

Totara <https://www.southernwoods.co.nz/shop/podocarpus-totara/>

Twiggy Tree Daisy <https://www.southernwoods.co.nz/shop/olearia-lineata-dartonii/>

Wind Grass <https://www.southernwoods.co.nz/shop/anemanthele-bamboo-tussock-wind-grass/>

Wiwi – Rush <https://www.southernwoods.co.nz/shop/juncus-edgariae/>

Materials Strategy Images

Quartzofeldspathic stone <https://geologyscience.com/rocks/metamorphic-rocks/schist/>

Greywacke Chip <http://www.wharehine.nz/decorative-products/>

Exposed Aggregate <https://www.concreteinnovations.co.nz/gallery?lightbox=datatem-j6g8qyjj>

Honed Dry block <https://www.dunlapmasonry.com/burnished-block>

Red Brick <https://www.brusheezy.com/free/red-brick>

Concrete <https://www.freepik.com/free-photos-vectors/concrete>

Red Corrugated Iron https://www.123rf.com/photo_35147380_detail-shot-of-a-red-corrugated-iron-with-horizontal-pattern-and-one-vertical-row-of-silver-screws-o.html

Corten Steel <https://www.pinterest.nz/pin/433401164115062716/>

Hardwood – Rimu <https://archipro.co.nz/product/rimu-wood-flooring-water-based-polyurethane-finish-freedom-flooring>

Benmore Dam <https://www.odt.co.nz/regions/north-otago/transmission-upgrade-necessitates-expansion>

Aviemore Dam https://en.wikipedia.org/wiki/Aviemore_Dam

Red Barn <https://www.google.com/maps/search/Otematata+boat+club/@-44.6066347,170.1892098,1145m/data=!3m1!1e3>

Otematata River <https://www.google.com/search?q=Otematata+river&tbm=isch&ved>

Otematata Bar https://www.tripadvisor.co.nz/Hotel_Review-g6483419-d13791764-Reviews-Otematata_Eatery_Bar_Lodging-Otematata_Otago_Region_South_Island.html

Otematata Hotel https://commons.wikimedia.org/wiki/File:Otematata_Lakes_Hotel.JPG

Otematata 'O' Pipe <https://cyclejourneys.co.nz/alps-2-ocean/local-info/waitaki-valley-2/>

Otematata Country Inn <https://www.realestate.co.nz/3410984/commercial/lease/12-rata-drive-otematata>

Otematata Sign <https://www.otematata.kiwi.nz/gallery>

Alps to Ocean Track <https://www.alps2ocean.com/trail-map/omarama-to-otematata>

Wetland Sign <https://www.oct.org.nz/news/otematata-wetlands-walk>

Wildlife Images

Black Swan <https://www.stickpng.com/img/animals/swans/black-swan>

Brown Trout <https://www.gsmnp.com/brown-trout/>

Fantail <https://www.hiclipart.com/search?clipart=new+Zealand+Fantail>

Great crested Grebe https://www.clipartmax.com/middle/m2i8Z5d3i8i8Z5d3_great-crested-grebe-water-bird/

Greater scaup <https://www.pngwave.com/png-clip-art-arbwg>

Long finned eel <https://alchetron.com/Eel>

Mallard <https://www.hiclipart.com/free-transparent-background-png-clipart-pjexw>

Paradise duck <http://www.allwhitebackground.com/duck.html>

Pukeko <https://www.rainbowmentalhealth.com/practice-guide>

Salmon <https://www.stickpng.com/img/food/seafood/pink-salmon>

Short finned eel <https://www.alamy.com/close-up-of-shortfin-eel-anguilla-bicolor-isolated-on-white-background-image337406518.html>

Swallow <https://www.hiclipart.com/search?clipart=swallow+Nest>

Tree Frog <https://inaturalist.nz/taxa/23969-Hyla-cinerea>

White Faced heron http://clipart-library.com/clip-art/176-1767965_white-faced-heron-heron.htm

Yellow eyed mullet https://pir.sa.gov.au/fishing/fishing_limits